

For Research Use Only

ANAPC10 Polyclonal antibody

Catalog Number:15788-1-AP



Basic Information

Catalog Number: 15788-1-AP	GenBank Accession Number: BC005217	Purification Method: Antigen affinity purification
Size: 150ul , Concentration: 500 ug/ml by Nanodrop;	GeneID (NCBI): 10393	Recommended Dilutions: WB 1:500-1:1000 IHC 1:100-1:200
Source: Rabbit	UNIPROT ID: Q9UM13	
Isotype: IgG	Full Name: anaphase promoting complex subunit 10	
Immunogen Catalog Number: AG8487	Calculated MW: 185 aa, 21 kDa	
	Observed MW: 20 kDa	

Applications

Tested Applications:

WB, IHC, ELISA

Species Specificity:

human, mouse, rat

Note-IHC: suggested antigen retrieval with TE buffer pH 9.0; (*) Alternatively, antigen retrieval may be performed with citrate buffer pH 6.0

Positive Controls:

WB : mouse testis tissue, rat testis tissue

IHC : human heart tissue,

Background Information

Anaphase-promoting complex subunit 10 (Anapc10) is a component of the promoting complex/cyclosome (APC/C), a cell cycle-regulated E3 ubiquitin ligase. Anapc10 recognizes ubiquitination-mediated degradation of substrates, and is expressed predominantly in the cytoplasm of spermatogonial and leptoblast cells.

Storage

Storage:

Store at -20°C. Stable for one year after shipment.

Storage Buffer:

PBS with 0.02% sodium azide and 50% glycerol pH 7.3.

Aliquoting is unnecessary for -20°C storage

*** 20ul sizes contain 0.1% BSA

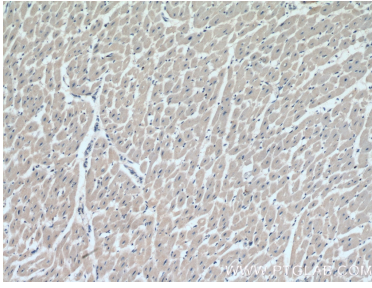
For technical support and original validation data for this product please contact:

T: 1 (888) 4PTGLAB (1-888-478-4522) (toll free in USA), or 1(312) 455-8498 (outside USA)

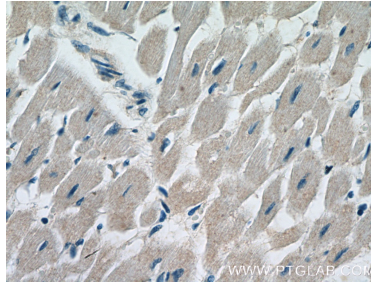
E: proteintech@ptglab.com
W: ptglab.com

This product is exclusively available under Proteintech Group brand and is not available to purchase from any other manufacturer.

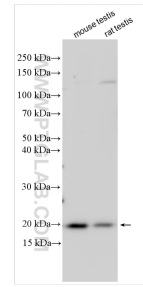
Selected Validation Data



Immunohistochemical analysis of paraffin-embedded human heart tissue slide using 15788-1-AP (ANAPC10 Antibody) at dilution of 1:200 (under 10x lens).



Immunohistochemical analysis of paraffin-embedded human heart tissue slide using 15788-1-AP (ANAPC10 Antibody) at dilution of 1:200 (under 40x lens).



Various lysates were subjected to SDS PAGE followed by western blot with 15788-1-AP (ANAPC10 antibody) at dilution of 1:800 incubated at room temperature for 1.5 hours.