

For Research Use Only

S100A8 Polyclonal antibody

Catalog Number: 15792-1-AP

Featured Product

12 Publications



Basic Information

Catalog Number:

15792-1-AP

Size:

150ul, Concentration: 500 µg/ml by Nanodrop and 267 µg/ml by Bradford method using BSA as the standard;

Source:

Rabbit

Isotype:

IgG

Immunogen Catalog Number:

AG8500

GenBank Accession Number:

BC005928

GeneID (NCBI):

6279

Full Name:

S100 calcium binding protein A8

Calculated MW:

93 aa, 11 kDa

Observed MW:

11 kDa

Purification Method:

Antigen affinity purification

Recommended Dilutions:

WB 1:500-1:1000

IHC 1:200-1:800

Applications

Tested Applications:

FC (Intra), IHC, WB, ELISA

Cited Applications:

IF, IHC, WB

Species Specificity:

human, mouse

Cited Species:

human, mouse, rat

Note-IHC: suggested antigen retrieval with TE buffer pH 9.0; (*) Alternatively, antigen retrieval may be performed with citrate buffer pH 6.0

Positive Controls:

WB : THP-1 cells, A549 cells, COLO 320 cells

IHC : human stomach cancer tissue,

Background Information

S100A8 is a member of the S100 family of proteins containing 2 EF-hand calcium-binding motifs. S100 proteins are localized in the cytoplasm and/or nucleus of a wide range of cells, and involved in the regulation of a number of cellular processes such as cell cycle progression and differentiation. S100 genes include at least 13 members which are located as a cluster on chromosome 1q21. This protein may function in the inhibition of casein kinase and as a cytokine. S100A8 may form homodimer or heterodimer with S100A9(16216873).

Notable Publications

Author	Pubmed ID	Journal	Application
Yi-Han Lin	32963032	Mol Cell Proteomics	WB
Li Zhang	32920982	Acta Physiol (Oxf)	WB
Yuting Zhang	33081041	Int J Mol Sci	WB

Storage

Storage:

Store at -20°C. Stable for one year after shipment.

Storage Buffer:

PBS with 0.02% sodium azide and 50% glycerol pH 7.3.

Aliquoting is unnecessary for -20°C storage

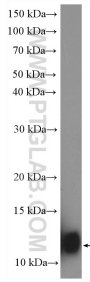
For technical support and original validation data for this product please contact:

T: 1 (888) 4PTGLAB (1-888-478-4522) (toll free in USA), or 1(312) 455-8498 (outside USA)

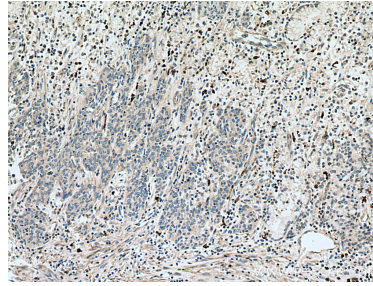
E: proteintech@ptglab.com
W: ptglab.com

This product is exclusively available under Proteintech Group brand and is not available to purchase from any other manufacturer.

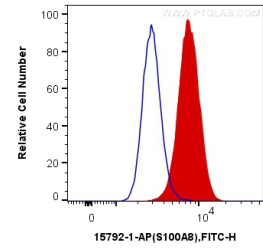
Selected Validation Data



THP-1 cells were subjected to SDS PAGE followed by western blot with 15792-1-AP (S100A8 antibody) at dilution of 1:600 incubated at room temperature for 1.5 hours.



Immunohistochemical analysis of paraffin-embedded human stomach cancer tissue slide using 15792-1-AP (S100A8 antibody) at dilution of 1:400 (under 10x lens). Heat mediated antigen retrieval with Tris-EDTA buffer (pH 9.0).



1×10^6 RAW 264.7 cells were intracellularly stained with 0.4 ug Anti-Human S100A8 (15792-1-AP) and CoraLite®488-Conjugated AffiniPure Goat Anti-Rabbit IgG(H+L) at dilution 1:1000 (red), or 0.4 ug Control Antibody. Cells were fixed with 4% PFA and permeabilized with Flow Cytometry Perm Buffer (PF00011-C).