

For Research Use Only

# LRCH3 Polyclonal ANTIBODY

Catalog Number: 15800-1-AP



## Basic Information

Catalog Number:  
15800-1-AP

Size:  
55 µg/150 µl

Source:  
Rabbit

Isotype:  
IgG

Purification Method:  
Antigen affinity purification

Immunogen Catalog Number:  
AG3511

GenBank Accession Number:  
BC007504

GeneID (NCBI):  
84859

Full Name:  
leucine-rich repeats and calponin homology  
(CH) domain containing 3

Calculated MW:  
86 kDa

Observed MW:  
70 kDa

Recommended Dilutions:

WB 1:500-1:2400

IP 0.5-4.0 µg for IP and 1:500-1:2000 for WB

IF 1:10-1:100

## Applications

Tested Applications:

IF, IP, WB, ELISA

Species Specificity:

human,mouse,rat

**Note: suggested antigen retrieval with TE buffer pH 9.0; (\*) Alternatively, antigen retrieval may be performed with citrate buffer pH 6.0**

Positive Controls:

WB : human liver tissue; human heart tissue, human spleen tissue, Jurkat cells, mouse lung tissue

IP : mouse liver tissue;

IF : A431 cells;

## Background Information

### Notable Publications

Author	Pubmed ID	Journal	Application
--------	-----------	---------	-------------

## Storage

Storage:

Store at -20°C. Stable for one year after shipment.

Storage Buffer:

PBS with 0.02% sodium azide and 50% glycerol pH 7.3.

Aliquoting is unnecessary for -20°C storage

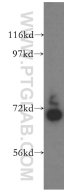
For technical support and original validation data for this product please contact:

T: 1 (888) 4PTGLAB (1-888-478-4522) (toll free in USA), or 1(312) 455-8498 (outside USA)

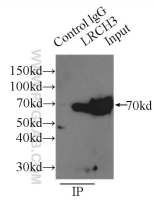
E: [proteintech@ptglab.com](mailto:proteintech@ptglab.com)  
W: [ptglab.com](http://ptglab.com)

This product is exclusively available under Proteintech Group brand and is not available to purchase from any other manufacturer.

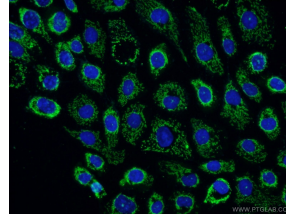
## Selected Validation Data



human liver tissue were subjected to SDS PAGE followed by western blot with 15800-1-AP(LRCH3 antibody) at dilution of 1:500 incubated at room temperature for 1.5 hours



IP Result of anti-LRCH3 (IP:15800-1-AP, 3ug; Detection:15800-1-AP 1:1000) with mouse liver tissue lysate 12500ug.



Immunofluorescent analysis of A431 cells using 15800-1-AP(LRCH3 antibody) at dilution of 1:25 and Alexa Fluor 488-conjugated AffiniPure Goat Anti-Rabbit IgG(H+L)