

For Research Use Only

GLRX Polyclonal antibody

Catalog Number: 15804-1-AP

Featured Product

12 Publications



Basic Information

Catalog Number:

15804-1-AP

Size:

150ul, Concentration: 550 ug/ml by Nanodrop and 273 ug/ml by Bradford method using BSA as the standard;

Source:

Rabbit

Isotype:

IgG

Immunogen Catalog Number:

AG8535

GenBank Accession Number:

BC005304

GeneID (NCBI):

2745

UNIPROT ID:

P35754

Full Name:

glutaredoxin (thioltransferase)

Calculated MW:

106 aa, 12 kDa

Observed MW:

12 kDa

Purification Method:

Antigen affinity purification

Recommended Dilutions:

WB: 1:1000-1:6000

IF/ICC: 1:50-1:500

Applications

Tested Applications:

WB, IF/ICC, ELISA

Cited Applications:

WB, IF

Species Specificity:

human, mouse, rat

Cited Species:

human, mouse, rat

Positive Controls:

WB: A549 cells, human milk, mouse lung tissue, Jurkat cells, human placenta tissue

IF/ICC: HepG2 cells,

Notable Publications

Author	Pubmed ID	Journal	Application
Qi Fan	35693421	Mol Vis	WB
Zhengguo Qiu	33956252	J Bioenerg Biomembr	WB
Pengying Li	26956544	Sci Rep	WB

Storage

Storage:

Store at -20°C. Stable for one year after shipment.

Storage Buffer:

PBS with 0.02% sodium azide and 50% glycerol, pH7.3

Aliquoting is unnecessary for -20°C storage

*** 20ul sizes contain 0.1% BSA

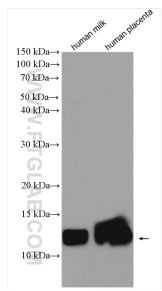
For technical support and original validation data for this product please contact:

T: 1 (888) 4PTGLAB (1-888-478-4522) (toll free in USA), or 1(312) 455-8498 (outside USA)

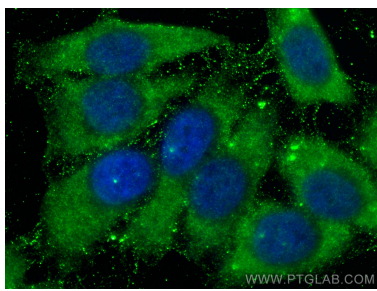
E: proteintech@ptglab.com
W: ptglab.com

This product is exclusively available under Proteintech Group brand and is not available to purchase from any other manufacturer.

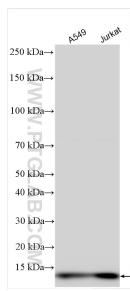
Selected Validation Data



Various lysates were subjected to SDS PAGE followed by western blot with 15804-1-AP (GLRX antibody) at dilution of 1:500 incubated at room temperature for 1.5 hours.



Immunofluorescent analysis of (-20°C Methanol) fixed HepG2 cells using GLRX antibody (15804-1-AP) at dilution of 1:200 and CoraLite®488-Conjugated AffiniPure Goat Anti-Rabbit IgG(H+L).



Various lysates were subjected to SDS PAGE followed by western blot with 15804-1-AP (GLRX antibody) at dilution of 1:3000 incubated at room temperature for 1.5 hours.