

For Research Use Only

Alpha B Crystallin Polyclonal ANTIBODY



Catalog Number: 15808-1-AP

1 Publications

Basic Information

Catalog Number:
15808-1-AP

Size:
20 µg/150 µl

Source:
Rabbit

Isotype:
IgG

Purification Method:
Antigen affinity purification

Immunogen Catalog Number:
AC8543

GenBank Accession Number:
BC007008

GeneID (NCBI):
1410

Full Name:
crystallin, alpha B

Calculated MW:
175aa, 20 kDa

Observed MW:
20-22 kDa

Recommended Dilutions:

WB 1:500-1:1000

IP 0.5-4.0 µg for IP and 1:500-1:1000 for WB

IHC 1:20-1:200

IF 1:50-1:500

Applications

Tested Applications:
IF, IHC, IP, WB, ELISA

Cited Applications:
WB

Species Specificity:
human, mouse, rat

Cited Species:
human

Note: suggested antigen retrieval with *TE* buffer pH 9.0; (*) Alternatively, antigen retrieval may be performed with *citrate* buffer pH 6.0

Positive Controls:

WB: human heart tissue; mouse heart tissue, mouse skeletal muscle tissue

IP: mouse heart tissue;

IHC: human eye tissue; mouse heart tissue

IF: U2OS cells;

Background Information

Alpha B-crystallin, encoded by CRYAB gene, is multifunctional, serving as both a major structural protein in the lens and a small heat-shock protein in other tissues in mammals. Alpha B-crystallin may contribute to the transparency and refractive index of the lens. Single nucleotide polymorphisms (SNPs) in the promoter region of CRYAB gene have been associated with multiple sclerosis. Mutations in the CRYAB gene cause distinct clinical phenotypes including isolated posterior polar cataract, myofibrillar myopathy, cardiomyopathy, or a multisystemic disorder combining all these features. Impairment of alpha-B crystallin dimerization may be relevant to the pathogenesis of these disorders.

Notable Publications

Author	Pubmed ID	Journal	Application
Daniele Vergara	29138676	Oxid Med Cell Longev	WB

Storage

Storage:

Store at -20°C. Stable for one year after shipment.

Storage Buffer:

PBS with 0.02% sodium azide and 50% glycerol pH 7.3.

Aliquoting is unnecessary for -20°C storage

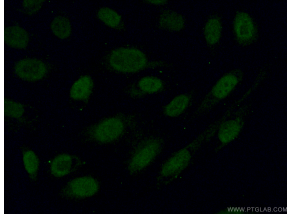
For technical support and original validation data for this product please contact:

T: 1 (888) 4PTGLAB (1-888-478-4522) (toll free in USA), or 1(312) 455-8498 (outside USA)

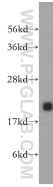
E: proteintech@ptglab.com
W: ptglab.com

This product is exclusively available under Proteintech Group brand and is not available to purchase from any other manufacturer.

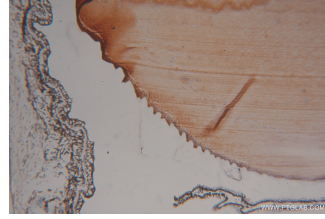
Selected Validation Data



Immunofluorescent analysis of (4% PFA) fixed U2OS cells using 15808-1-AP (Alpha B Crystallin antibody) at dilution of 1:50 and Alexa Fluor 488-conjugated AffiniPure Goat Anti-Rabbit IgG(H+L)



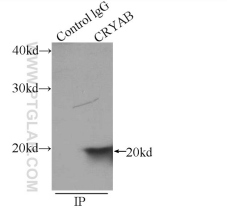
human heart tissue were subjected to SDS PAGE followed by western blot with 15808-1-AP(CRYAB antibody) at dilution of 1:500 incubated at room temperature for 1.5 hours



Immunohistochemical of paraffin-embedded human eye using 15808-1-AP(CRYAB antibody) at dilution of 1:100 (under 10x lens)



Immunohistochemical of paraffin-embedded human eye using 15808-1-AP(CRYAB antibody) at dilution of 1:100 (under 40x lens)



IP Result of anti-Alpha B Crystallin (IP: 15808-1-AP, 3ug; Detection: 15808-1-AP 1:500) with mouse heart tissue lysate 4000ug.