

For Research Use Only

PSMC6 Polyclonal antibody

Catalog Number: 15839-1-AP 2 Publications



Basic Information

Catalog Number: 15839-1-AP	GenBank Accession Number: BC005390	Purification Method: Antigen affinity purification
Size: 150ul , Concentration: 500 µg/ml by Nanodrop and 333 µg/ml by Bradford method using BSA as the standard;	GeneID (NCBI): 5706	Recommended Dilutions: WB 1:1000-1:8000 IHC 1:250-1:1000
Source: Rabbit	Full Name: proteasome (prosome, macropain) 26S subunit, ATPase, 6	
Isotype: IgG	Calculated MW: 389 aa, 44 kDa	
Immunogen Catalog Number: AG8589	Observed MW: 42 kDa	

Applications

Tested Applications: IHC, WB, ELISA	Positive Controls: WB : mouse brain tissue, human brain tissue, human testis tissue, rat liver tissue, mouse liver tissue, rat brain tissue IHC : human liver cancer tissue, mouse brain tissue
Cited Applications: IHC, WB	
Species Specificity: human, mouse, rat	
Cited Species: mouse, rat	
Note-IHC: suggested antigen retrieval with TE buffer pH 9.0; (*) Alternatively, antigen retrieval may be performed with citrate buffer pH 6.0	

Background Information

PSMC6(proteasome (prosome, macropain) 26S subunit, ATPase, 6) is also named as CADP44, MGC12520, P44, SUG2, p42 and belongs to the AAA ATPase family. It is a component of the 26S protease, which is involved in the ATP-dependent degradation of ubiquitinated proteins. The regulatory (or ATPase) complex confers ATP dependency and substrate specificity to the 26S complex. The gene encodes a 44 kDa PSMC6.

Notable Publications

Author	Pubmed ID	Journal	Application
Kuixiang Chen	29435775	Cardiovasc Drugs Ther	WB
Yanting Yu	33864412	FASEB J	IHC

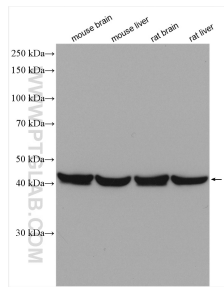
Storage

Storage:
Store at -20°C. Stable for one year after shipment.
Storage Buffer:
PBS with 0.02% sodium azide and 50% glycerol pH 7.3.
Aliquoting is unnecessary for -20°C storage

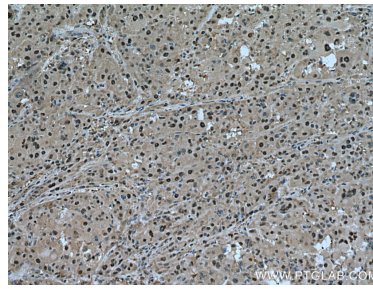
For technical support and original validation data for this product please contact:
T: 1 (888) 4PTGLAB (1-888-478-4522) (toll free in USA), or 1(312) 455-8498 (outside USA)
E: proteintech@ptglab.com
W: ptglab.com

This product is exclusively available under Proteintech Group brand and is not available to purchase from any other manufacturer.

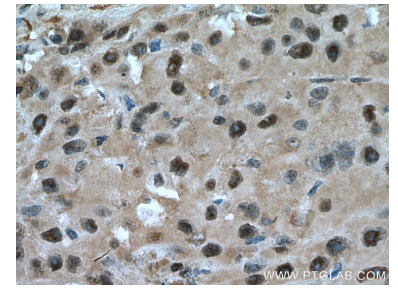
Selected Validation Data



Various lysates were subjected to SDS PAGE followed by western blot with 15839-1-AP (PSMC6 antibody) at dilution of 1:4000 incubated at room temperature for 1.5 hours.



Immunohistochemical analysis of paraffin-embedded human liver cancer tissue slide using 15839-1-AP (PSMC6 antibody) at dilution of 1:500 (under 10x lens). Heat mediated antigen retrieval with Tris-EDTA buffer (pH 9.0).



Immunohistochemical analysis of paraffin-embedded human liver cancer tissue slide using 15839-1-AP (PSMC6 antibody) at dilution of 1:500 (under 40x lens). Heat mediated antigen retrieval with Tris-EDTA buffer (pH 9.0).