

For Research Use Only

# Amylase Alpha Polyclonal antibody



Catalog Number: 15845-1-AP

2 Publications

## Basic Information

**Catalog Number:**

15845-1-AP

**Size:**

150ul , Concentration: 207 µg/ml by Bradford method using BSA as the standard;

**Source:**

Rabbit

**Isotype:**

IgG

**Immunogen Catalog Number:**

AG8605

**GenBank Accession Number:**

BC007060

**GeneID (NCBI):**

279

**Full Name:**

amylase, alpha 2A (pancreatic)

**Calculated MW:**

511 aa, 58 kDa

**Observed MW:**

58 kDa

**Purification Method:**

Antigen affinity purification

**Recommended Dilutions:**

WB 1:500-1:2000

IHC 1:20-1:200

## Applications

**Tested Applications:**

IHC, WB, ELISA

**Cited Applications:**

IHC

**Species Specificity:**

human, mouse

**Cited Species:**

human

**Note-IHC: suggested antigen retrieval with TE buffer pH 9.0; (\*) Alternatively, antigen retrieval may be performed with citrate buffer pH 6.0**

**Positive Controls:**

WB : human liver tissue, mouse pancreas tissue

IHC : human pancreas tissue,

## Background Information

The complete human amylase gene contains five intact genes: two pancreatic genes (AMY2A and AMY2B) and three salivary genes (AMY1A, AMY1B, and AMY1C). AMY2A (Pancreatic alpha-amylase) is also named as PA and is a 56 kDa protein consisting of 496 amino acids in a single polypeptide chain, folded into three domains (PMID:10657258). AMY2A and AMY2B transcripts are present in the human pancreas but not in the parotid salivary gland, while AMY1 transcripts are present in the parotid gland but not in the pancreas (PMID:1692956). 15845-1-AP can recognize both AMY1 and AMY2.

## Notable Publications

Author	Pubmed ID	Journal	Application
Satoshi Furukawa	28190929	J Toxicol Pathol	IHC
Takayasu Moroki	33976473	J Toxicol Pathol	IHC

## Storage

**Storage:**

Store at -20°C. Stable for one year after shipment.

**Storage Buffer:**

PBS with 0.02% sodium azide and 50% glycerol pH 7.3.

Aliquoting is unnecessary for -20°C storage

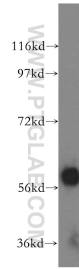
For technical support and original validation data for this product please contact:

T: 1 (888) 4PTGLAB (1-888-478-4522) (toll free in USA), or 1(312) 455-8498 (outside USA)

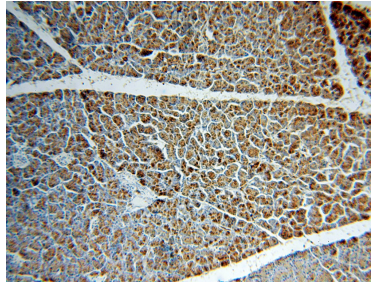
E: proteintech@ptglab.com  
W: ptglab.com

This product is exclusively available under Proteintech Group brand and is not available to purchase from any other manufacturer.

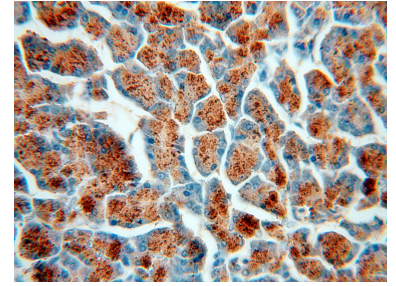
## Selected Validation Data



human liver tissue were subjected to SDS PAGE followed by western blot with 15845-1-AP (Amylase, alpha antibody) at dilution of 1:500 incubated at room temperature for 1.5 hours.



Immunohistochemical analysis of paraffin-embedded human pancreas using 15845-1-AP (Amylase, alpha antibody) at dilution of 1:100 (under 10x lens).



Immunohistochemical analysis of paraffin-embedded human pancreas using 15845-1-AP (Amylase, alpha antibody) at dilution of 1:100 (under 40x lens).