

Insulin Polyclonal ANTIBODY

Catalog Number: 15848-1-AP

14 Publications

Basic Information

Catalog Number:
15848-1-AP

Size:
42 µg/150 µl

Source:
Rabbit

Isotype:
IgG

Purification Method:
Antigen affinity purification

Immunogen Catalog Number:
AC3630

GenBank Accession Number:
BC005255

GeneID (NCBI):
3630

Full Name:
insulin

Calculated MW:
110aa, 12 kDa

Observed MW:
36 kDa

Recommended Dilutions:

IHC 1:500-1:1000

IF 1:250-1:1000

Applications

Tested Applications:

IF, IHC, ELISA

Cited Applications:

IF, IHC

Species Specificity:

human, mouse, rat

Cited Species:

human, mouse, rat

Note: suggested antigen retrieval with TE buffer pH 9.0; (*) Alternatively, antigen retrieval may be performed with citrate buffer pH 6.0

Positive Controls:

IHC : human pancreas tissue; mouse pancreas tissue; rat pancreas tissue

IF : human pancreas tissue; rat pancreas tissue

Background Information

Insulin is a peptide hormone, produced by beta cells of the pancreas, and is central to regulating carbohydrate and fat metabolism in the body. It participates in glucose utilization, protein synthesis and in the formation and storage of neutral lipids. Insulin is synthesized as a precursor molecule, proinsulin, which is processed prior to secretion. A- and B-peptides are joined together by a disulfide bond to form insulin, while the central portion of the precursor molecule is cleaved and released as the C-peptide. Defects in insulin results in type 1 diabetes mellitus.

Notable Publications

Author	Pubmed ID	Journal	Application
Lilia Maneva-Radicheva	25259810	PLoS One	IHC
Qiuyu Wang	30301245	Int J Mbl Sci	IHC
Wen Guo	26973702	Nutr Metab (Lond)	IHC

Storage

Storage:

Store at -20°C. Stable for one year after shipment.

Storage Buffer:

PBS with 0.02% sodium azide and 50% glycerol pH 7.3.

Aliquoting is unnecessary for -20°C storage

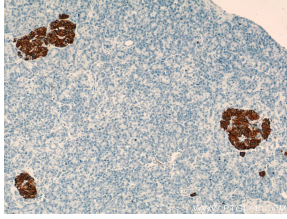
For technical support and original validation data for this product please contact:

T: 1 (888) 4PTGLAB (1-888-478-4522) (toll free in USA), or 1(312) 455-8498 (outside USA)

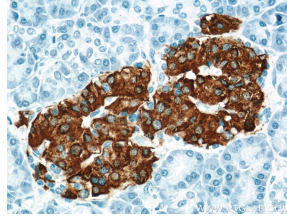
E: proteintech@ptglab.com
W: ptglab.com

This product is exclusively available under Proteintech Group brand and is not available to purchase from any other manufacturer.

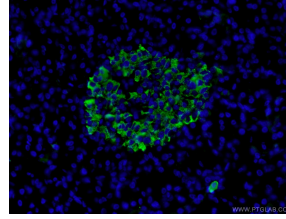
Selected Validation Data



Immunohistochemical analysis of paraffin-embedded human pancreas using 15848-1-AP(INS antibody) at dilution of 1:500 (under 10x lens)



Immunohistochemical analysis of paraffin-embedded human pancreas using 15848-1-AP(INS antibody) at dilution of 1:500 (under 40x lens)



Immunofluorescent analysis of (4% PFA) fixed human pancreas tissue using 15848-1-AP (Insulin antibody) at dilution of 1:500 and Alexa Fluor 488-conjugated AffiniPure Goat Anti-Rabbit IgG(H+L)