

For Research Use Only

PPP2R1A Polyclonal antibody

Catalog Number: 15882-1-AP

Featured Product

10 Publications



Basic Information

Catalog Number:

15882-1-AP

Size:

150ul, Concentration: 600 ug/ml by Nanodrop;

Source:

Rabbit

Isotype:

IgG

Immunogen Catalog Number:

AG8661

GenBank Accession Number:

BC001537

GeneID (NCBI):

5518

UNIPROT ID:

P30153

Full Name:

protein phosphatase 2 (formerly 2A), regulatory subunit A, alpha isoform

Calculated MW:

589 aa, 65 kDa

Observed MW:

65 kDa

Purification Method:

Antigen affinity purification

Recommended Dilutions:

WB: 1:1000-1:6000

IP: 0.5-4.0 ug for 1.0-3.0 mg of total protein lysate

IHC: 1:50-1:500

IF/ICC: 1:50-1:500

Applications

Tested Applications:

WB, IHC, IF/ICC, IP, ELISA

Cited Applications:

WB, IHC, CoIP

Species Specificity:

human, mouse, rat

Cited Species:

human, mouse, pig

Note-IHC: suggested antigen retrieval with TE buffer pH 9.0; (*) Alternatively, antigen retrieval may be performed with citrate buffer pH 6.0

Positive Controls:

WB: HepG2 cells, A431 cells, mouse kidney tissue, rat liver tissue, SMMC-7721 cells, mouse liver tissue, LO2 cells

IP: HepG2 cells,

IHC: mouse kidney tissue, human kidney tissue, human ovary tumor tissue

IF/ICC: HEK-293 cells,

Background Information

PPP2R1A belongs to the phosphatase 2A regulatory subunit A family. PPP2R1A encodes the α -isoform of the scaffolding subunit of the serine/threonine protein phosphatase 2A (PP2A) holoenzyme. This tumour suppressor complex is involved in growth and survival pathways and PPP2R1A mutations in endometrial high-grade serous carcinomas are a frequent and potentially targetable feature of this disease (PMID: 21381030). The PPP2R1A gene has 86% identity with the PPP2R1B gene (PMID: 7681822).

Notable Publications

Author	Pubmed ID	Journal	Application
Hai Zheng	33243860	Science	WB
Changsheng Jiang	36094311	Microbiol Spectr	WB, CoIP
Shibin Hu	34534457	Mol Cell	WB

Storage

Storage:

Store at -20°C. Stable for one year after shipment.

Storage Buffer:

PBS with 0.02% sodium azide and 50% glycerol, pH7.3

Aliquoting is unnecessary for -20°C storage

*** 20ul sizes contain 0.1% BSA

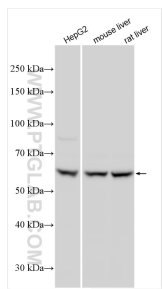
For technical support and original validation data for this product please contact:

T: 1 (888) 4PTGLAB (1-888-478-4522) (toll free in USA), or 1(312) 455-8498 (outside USA)

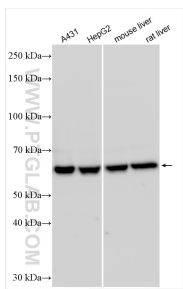
E: proteintech@ptglab.com
W: ptglab.com

This product is exclusively available under Proteintech Group brand and is not available to purchase from any other manufacturer.

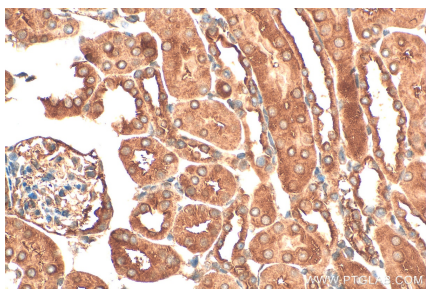
Selected Validation Data



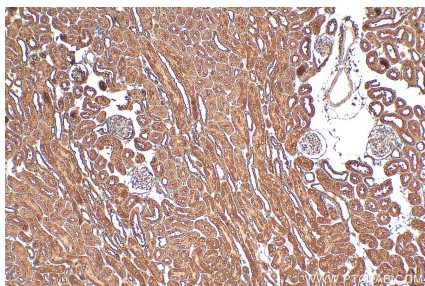
Various lysates were subjected to SDS PAGE followed by western blot with 15882-1-AP (PPP2R1A antibody) at dilution of 1:3000 incubated at room temperature for 1.5 hours.



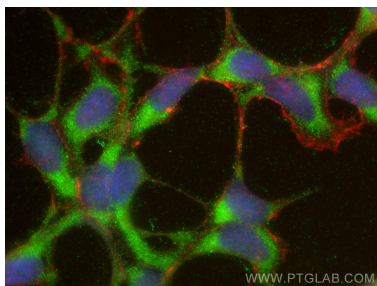
Various lysates were subjected to SDS PAGE followed by western blot with 15882-1-AP (PPP2R1A antibody) at dilution of 1:6000 incubated at room temperature for 1.5 hours.



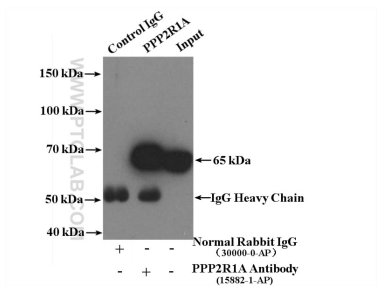
Immunohistochemical analysis of paraffin-embedded mouse kidney tissue slide using 15882-1-AP (PPP2R1A antibody) at dilution of 1:200 (under 40x lens). Heat mediated antigen retrieval with Tris-EDTA buffer (pH 9.0).



Immunohistochemical analysis of paraffin-embedded mouse kidney tissue slide using 15882-1-AP (PPP2R1A antibody) at dilution of 1:200 (under 10x lens). Heat mediated antigen retrieval with Tris-EDTA buffer (pH 9.0).



Immunofluorescent analysis of (-20°C Ethanol) fixed HEK-293 cells using PPP2R1A antibody (15882-1-AP) at dilution of 1:200 and Multi-rAb Coralite ® Plus 488-Goat Anti-Rabbit Recombinant Secondary Antibody (H+L) (RGAR002), CL594-Phalloidin (red).



IP result of anti-PPP2R1A (IP:15882-1-AP, 4ug; Detection:15882-1-AP 1:300) with HepG2 cells lysate 3200ug.