

For Research Use Only

RHEB Polyclonal antibody

Catalog Number: 15924-1-AP

Featured Product

15 Publications



Basic Information

Catalog Number:

15924-1-AP

Size:

150ul, Concentration: 500 ug/ml by Nanodrop;

Source:

Rabbit

Isotype:

IgG

Immunogen Catalog Number:

AG8747

GenBank Accession Number:

BC016155

GeneID (NCBI):

6009

UNIPROT ID:

Q15382

Full Name:

Ras homolog enriched in brain

Calculated MW:

184 aa, 20 kDa

Observed MW:

15-20 kDa

Purification Method:

Antigen affinity purification

Recommended Dilutions:

WB 1:1000-1:4000

IHC 1:50-1:500

IF-P 1:50-1:500

IF/ICC 1:50-1:500

Applications

Tested Applications:

WB, IHC, IF/ICC, IF-P, ELISA

Cited Applications:

WB, IHC, IF

Species Specificity:

human, mouse

Cited Species:

human, mouse, rat

Note-IHC: suggested antigen retrieval with TE buffer pH 9.0; (*) Alternatively, antigen retrieval may be performed with citrate buffer pH 6.0

Positive Controls:

WB : DU 145 cells, human brain tissue, HeLa cells, 3T3-L1 cells, fetal human brain tissue

IHC : human brain tissue, mouse brain tissue

IF-P : human pancreas cancer tissue,

IF/ICC : HeLa cells,

Background Information

Rheb is a member of the Ras superfamily small GTPases that plays important roles in the regulation of protein synthesis and growth in response to nutrient and growth factors. It is well known to bind and activate mTOR, a serine/threonine kinase which augments protein synthesis. Rheb has GTPase activity and shuttles between a GDP-bound form and a GTP-bound form, and farnesylation of the protein is required for this activity.

Notable Publications

| Author | Pubmed ID | Journal | Application |
|-----------|-----------|----------------------|-------------|
| Min Zheng | 26622727 | Oncol Lett | WB,IHC |
| Meng Chen | 34635641 | Cell Death Discov | WB |
| Jinlin Lv | 29017169 | Cell Physiol Biochem | WB |

Storage

Storage:

Store at -20°C. Stable for one year after shipment.

Storage Buffer:

PBS with 0.02% sodium azide and 50% glycerol, pH7.3

Aliquoting is unnecessary for -20°C storage

*** 20ul sizes contain 0.1% BSA

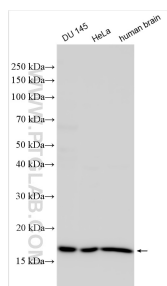
For technical support and original validation data for this product please contact:

T: 1 (888) 4PTGLAB (1-888-478-4522) (toll free in USA), or 1(312) 455-8498 (outside USA)

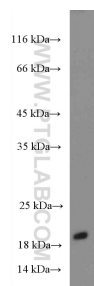
E: proteintech@ptglab.com
W: ptglab.com

This product is exclusively available under Proteintech Group brand and is not available to purchase from any other manufacturer.

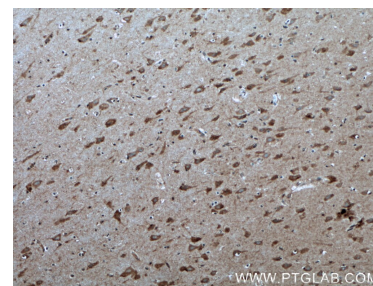
Selected Validation Data



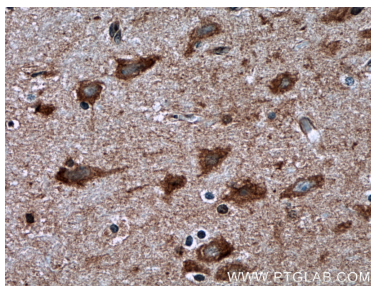
Various lysates were subjected to SDS PAGE followed by western blot with 15924-1-AP (RHEB antibody) at dilution of 1:2000 incubated at room temperature for 1.5 hours.



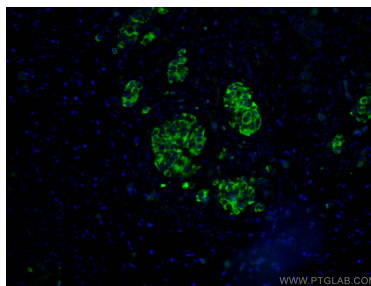
fetal human brain tissue were subjected to SDS PAGE followed by western blot with 15924-1-AP (RHEB Antibody) at dilution of 1:600 incubated at room temperature for 1.5 hours.



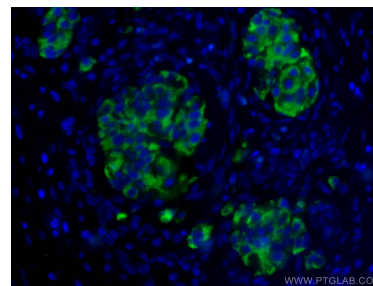
Immunohistochemical analysis of paraffin-embedded human brain tissue slide using 15924-1-AP (RHEB antibody) at dilution of 1:200 (under 10x lens. Heat mediated antigen retrieval with Tris-EDTA buffer (pH 9.0).



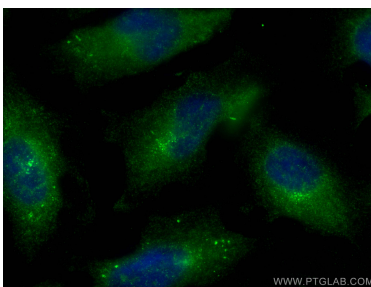
Immunohistochemical analysis of paraffin-embedded human brain tissue slide using 15924-1-AP (RHEB antibody) at dilution of 1:200 (under 40x lens. Heat mediated antigen retrieval with Tris-EDTA buffer (pH 9.0).



Immunofluorescent analysis of (4% PFA) fixed human pancreas cancer tissue using RHEB antibody (15924-1-AP) at dilution of 1:200 and CoraLite® 488-Conjugated Goat Anti-Rabbit IgG(H+L).



Immunofluorescent analysis of (4% PFA) fixed human pancreas cancer tissue using RHEB antibody (15924-1-AP) at dilution of 1:200 and CoraLite® 488-Conjugated Goat Anti-Rabbit IgG(H+L).



Immunofluorescent analysis of (-20°C Methanol) fixed HeLa cells using RHEB antibody (15924-1-AP) at dilution of 1:100 and CoraLite® 488-Conjugated Goat Anti-Rabbit IgG(H+L).