

For Research Use Only

SEC24A Polyclonal ANTIBODY



Catalog Number: 15958-1-AP **5 Publications**

Basic Information

Catalog Number: 15958-1-AP	GenBank Accession Number: BC019341	Purification Method: Antigen affinity purification
Size: 150UL, Concentration: 200 µg/ml by Bradford method using BSA as the standard;	GeneID (NCBI): 10802	Recommended Dilutions: WB 1:500-1:3000 IHC 1:20-1:200 IF 1:10-1:100
Source: Rabbit	Full Name: SEC24 family, member A (S. cerevisiae)	
Isotype: IgG	Calculated MW: 613 aa, 66 kDa	
Immunogen Catalog Number: AG8723	Observed MW: 66 kDa, 120 kDa	

Applications

Tested Applications: IF, IHC, WB, ELISA	Positive Controls: WB : COS-7 cells, human liver tissue, mouse skeletal muscle tissue, mouse thymus tissue, rat thymus tissue, HEK-293 cells, HeLa cells, HepG2 cells, NIH/3T3 cells
Cited Applications: IF, WB	IHC : human lymphoma tissue,
Species Specificity: human, mouse, rat, monkey	IF : HeLa cells,
Cited Species: human, mouse	
Note-IHC: suggested antigen retrieval with TE buffer pH 9.0; (*) Alternatively, antigen retrieval may be performed with citrate buffer pH 6.0	

Background Information

COPII-coated vesicles mediate anterograde transport from the ER to the Golgi apparatus. COPII is composed of three parts: two coat protein complexes (Sec23/24 complex and Sec13/31 complex) and one small GTP-binding protein, Sar1 (PMID: 9568718). Sec24 subunit of the coat complex has been implicated in cargo recognition (PMID: 17316621). In mammal cells there are four Sec24 isoforms, termed Sec24A, Sec24B, Sec24C, and Sec24D (PMID: 10329445). Two isoforms of 120 kDa and 66 kDa produced by alternative splicing have been described.

Notable Publications

Author	Pubmed ID	Journal	Application
Helene Möllerherm	28553287	Front Immunol	WB
Bo Wang	29939162	J Clin Invest	WB
Jinbo Han	26147081	Nature	WB

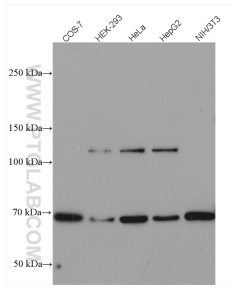
Storage

Storage:
Store at -20°C. Stable for one year after shipment.
Storage Buffer:
PBS with 0.02% sodium azide and 50% glycerol pH 7.3.
Aliquoting is unnecessary for -20°C storage

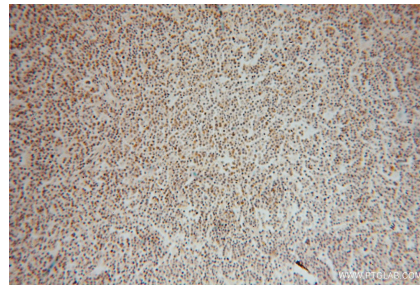
For technical support and original validation data for this product please contact:
T: 1 (888) 4PTGLAB (1-888-478-4522) (toll free in USA), or 1(312) 455-8498 (outside USA)
E: proteintech@ptglab.com
W: ptglab.com

This product is exclusively available under Proteintech Group brand and is not available to purchase from any other manufacturer.

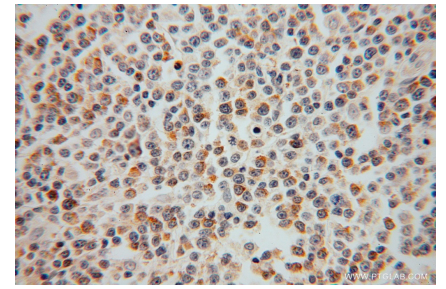
Selected Validation Data



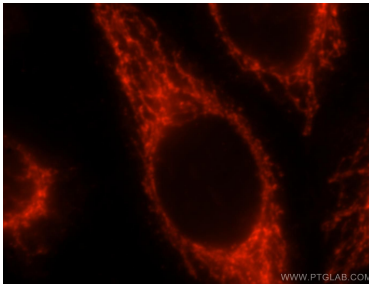
Various lysates were subjected to SDS PAGE followed by western blot with 15958-1-AP (SEC24A antibody) at dilution of 1:1500 incubated at room temperature for 1.5 hours.



Immunohistochemical analysis of paraffin-embedded human lymphoma using 15958-1-AP (SEC24A antibody) at dilution of 1:50 (under 10x lens).



Immunohistochemical analysis of paraffin-embedded human lymphoma using 15958-1-AP (SEC24A antibody) at dilution of 1:50 (under 40x lens).



Immunofluorescent analysis of HeLa cells, using SEC24A antibody 15958-1-AP at 1:25 dilution and Rhodamine-labeled goat anti-rabbit IgG (red).