

For Research Use Only

Spermine synthase Polyclonal antibody

Catalog Number: 15979-1-AP

Featured Product

10 Publications



Basic Information

Catalog Number:

15979-1-AP

Size:

150ul, Concentration: 133 ug/ml by Bradford method using BSA as the standard;

Source:

Rabbit

Isotype:

IgG

Immunogen Catalog Number:

AG8767

GenBank Accession Number:

BC009898

GeneID (NCBI):

6611

UNIPROT ID:

P52788

Full Name:

spermine synthase

Calculated MW:

366 aa, 41 kDa

Observed MW:

41 kDa, 60 kDa

Purification Method:

Antigen affinity purification

Recommended Dilutions:

WB: 1:500-1:3000

FC (Intra): 0.25 ug per 10⁶ cells in a 100 µl suspension

Applications

Tested Applications:

WB, FC (Intra), ELISA

Cited Applications:

WB, IHC

Species Specificity:

human

Cited Species:

human, mouse

Positive Controls:

WB : K-562 cells, human heart tissue, Jurkat cells

FC (Intra) : HeLa cells,

Notable Publications

Author	Pubmed ID	Journal	Application
Takeshi Uemura	32995657	Heliyon	WB
Fan Zhang	25411139	Proteomics	WB
Leslie A Sandusky-Beltran	31253191	Alzheimers Res Ther	WB

Storage

Storage:

Store at -20°C. Stable for one year after shipment.

Storage Buffer:

PBS with 0.02% sodium azide and 50% glycerol, pH7.3

Aliquoting is unnecessary for -20°C storage

*** 20ul sizes contain 0.1% BSA

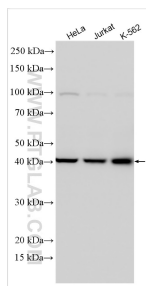
For technical support and original validation data for this product please contact:

T: 1 (888) 4PTGLAB (1-888-478-4522) (toll free in USA), or 1(312) 455-8498 (outside USA)

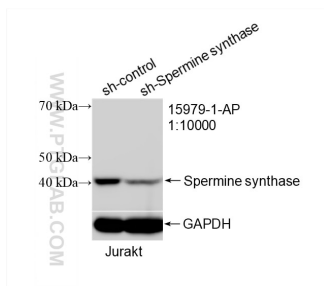
E: proteintech@ptglab.com
W: ptglab.com

This product is exclusively available under Proteintech Group brand and is not available to purchase from any other manufacturer.

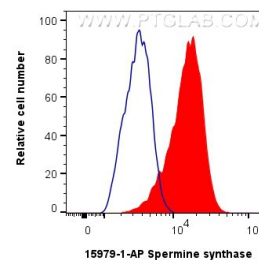
Selected Validation Data



Various lysates were subjected to SDS PAGE followed by western blot with 15979-1-AP (Spermine synthase antibody) at dilution of 1:1500 incubated at room temperature for 1.5 hours.



WB result of Spermine synthase antibody (15979-1-AP; 1:10000; incubated at room temperature for 1.5 hours) with sh-Control and sh-Spermine synthase transfected Jurkat cells.



1×10^6 HeLa cells were intracellularly stained with 0.25 μ g Spermine synthase Polyclonal antibody (15979-1-AP) and CoraLite®488-Conjugated Goat Anti-Rabbit IgG(H+L) (SA00013-2)(red), or 0.25 μ g Isotype Control (blue). Cells were fixed and permeabilized with Transcription Factor Staining Buffer Kit (PF00011).