

For Research Use Only

RPL27A Polyclonal antibody

Catalog Number: 16002-1-AP

Featured Product

3 Publications



Basic Information

Catalog Number:

16002-1-AP

Size:

150ul, Concentration: 350 ug/ml by Nanodrop and 253 ug/ml by Bradford method using BSA as the standard;

Source:

Rabbit

Isotype:

IgG

Immunogen Catalog Number:

AG8596

GenBank Accession Number:

BC005326

GeneID (NCBI):

6157

UNIPROT ID:

P46776

Full Name:

ribosomal protein L27a

Calculated MW:

148 aa, 18 kDa

Observed MW:

18 kDa

Purification Method:

Antigen affinity purification

Recommended Dilutions:

WB: 1:200-1:1000

IHC: 1:250-1:1000

IF/ICC: 1:200-1:800

Applications

Tested Applications:

WB, IHC, IF/ICC, ELISA

Cited Applications:

WB

Species Specificity:

human, mouse, rat

Cited Species:

human, rat

Note-IHC: suggested antigen retrieval with TE buffer pH 9.0; (*) Alternatively, antigen retrieval may be performed with citrate buffer pH 6.0

Positive Controls:

WB : A549 cells,

IHC : mouse stomach tissue,

IF/ICC : A549 cells,

Notable Publications

Author	Pubmed ID	Journal	Application
Zhengxiang Zhang	35030975	Bioengineered	WB
Mahmoud Dabbah	33887527	Transl Res	WB
Wei Wei	40209497	J Pharm Biomed Anal	WB

Storage

Storage:

Store at -20°C. Stable for one year after shipment.

Storage Buffer:

PBS with 0.02% sodium azide and 50% glycerol, pH7.3

Aliquoting is unnecessary for -20°C storage

*** 20ul sizes contain 0.1% BSA

For technical support and original validation data for this product please contact:

T: 1 (888) 4PTGLAB (1-888-478-4522) (toll free in USA), or 1(312) 455-8498 (outside USA)

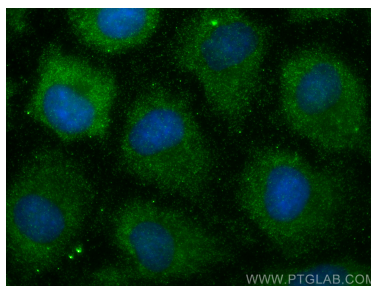
E: proteintech@ptglab.com
W: ptglab.com

This product is exclusively available under Proteintech Group brand and is not available to purchase from any other manufacturer.

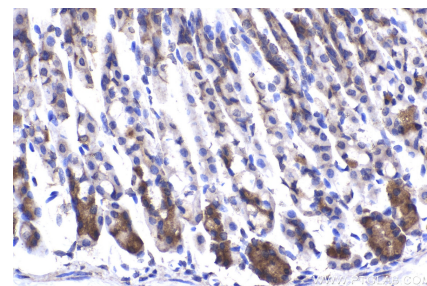
Selected Validation Data



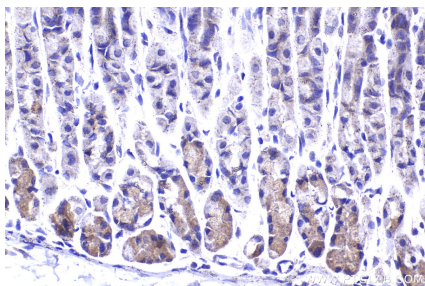
A549 cells were subjected to SDS PAGE followed by western blot with 16002-1-AP (RPL27A Antibody) at dilution of 1:300 incubated at 4 degree celsius over night.



Immunofluorescent analysis of (-20°C Methanol) fixed A549 cells using RPL27A antibody (16002-1-AP) at dilution of 1:400 and CoraLite®488-Conjugated Goat Anti-Rabbit IgG(H+L) (SA00013-2).



Immunohistochemical analysis of paraffin-embedded mouse stomach tissue slide using 16002-1-AP (RPL27A antibody) at dilution of 1:200 (under 40x lens). Heat mediated antigen retrieval with Tris-EDTA buffer (pH 9.0).



Immunohistochemical analysis of paraffin-embedded mouse stomach tissue slide using 16002-1-AP (RPL27A antibody) at dilution of 1:500 (under 40x lens). Heat mediated antigen retrieval with Tris-EDTA buffer (pH 9.0).