

For Research Use Only

TUSC3 Polyclonal antibody

Catalog Number: 16039-1-AP

Featured Product

4 Publications



Basic Information

Catalog Number:

16039-1-AP

Size:

150ul , Concentration: 160 µg/ml by Nanodrop and 160 µg/ml by Bradford method using BSA as the standard;

Source:

Rabbit

Isotype:

IgG

Immunogen Catalog Number:

AG8912

GenBank Accession Number:

BC010370

GeneID (NCBI):

7991

Full Name:

tumor suppressor candidate 3

Calculated MW:

347 aa, 40 kDa

Observed MW:

35-40 kDa

Purification Method:

Antigen affinity purification

Recommended Dilutions:

WB 1:200-1:1000

Applications

Tested Applications:

WB, ELISA

Cited Applications:

WB

Species Specificity:

human, mouse, rat

Cited Species:

human

Positive Controls:

WB : rat testis tissue, HeLa cells

Background Information

TUSC3 (tumor suppressor candidate 3), originally named N33, is a potential tumor suppressor gene. Decreased expression of TUSC3 has been found in various cancers, including prostate cancer, pancreas cancer and ovary cancer. TUSC3 also known as OST3A, is identified as a part of the oligosaccharyl-transferase (OST) complex and plays a crucial role in protein N-glycosylation. TUSC3 mutations have been found in families with non-syndromic autosomal recessive mental retardation.

Notable Publications

Author	Pubmed ID	Journal	Application
Young-Jun Jeon	30504895	Nat Commun	
Natalia A Cherepanova	26864433	Sci Rep	WB
Natalia A Cherepanova	25135935	J Cell Biol	WB

Storage

Storage:

Store at -20°C. Stable for one year after shipment.

Storage Buffer:

PBS with 0.02% sodium azide and 50% glycerol pH 7.3.

Aliquoting is unnecessary for -20°C storage

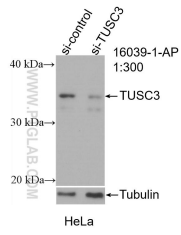
For technical support and original validation data for this product please contact:

T: 1 (888) 4PTGLAB (1-888-478-4522) (toll free in USA), or 1(312) 455-8498 (outside USA)

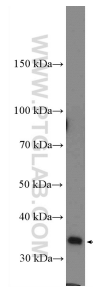
E: proteintech@ptglab.com
W: ptglab.com

This product is exclusively available under Proteintech Group brand and is not available to purchase from any other manufacturer.

Selected Validation Data



WB result of TUSC3 antibody (16039-1-AP; 1:300; incubated at room temperature for 1.5 hours) with sh-Control and sh-TUSC3 transfected HeLa cells.



rat testis tissue were subjected to SDS PAGE followed by western blot with 16039-1-AP (TUSC3 Antibody) at dilution of 1:300 incubated at room temperature for 1.5 hours.