

For Research Use Only

PMPCB Polyclonal ANTIBODY



Catalog Number: 16064-1-AP

Featured Product

11 Publications

Basic Information

Catalog Number:

16064-1-AP

Size:

150UL, Concentration: 300 µg/ml by Bradford method using BSA as the standard;

Source:

Rabbit

Isotype:

IgG

Immunogen Catalog Number:

AG8937

GenBank Accession Number:

BC010398

GeneID (NCBI):

9512

Full Name:

peptidase (mitochondrial processing) beta

Calculated MW:

489 aa, 54 kDa

Observed MW:

43-52 kDa

Purification Method:

Antigen affinity purification

Recommended Dilutions:

WB 1:500-1:3000

IP 0.5-4.0 µg for IP and 1:500-1:1000

for WB

IHC 1:20-1:200

IF 1:10-1:100

Applications

Tested Applications:

IF, IHC, IP, WB, ELISA

Cited Applications:

IF, WB

Species Specificity:

human, mouse, rat

Cited Species:

human

Note-IHC: suggested antigen retrieval with TE buffer pH 9.0; (*) Alternatively, antigen retrieval may be performed with citrate buffer pH 6.0

Positive Controls:

WB: MCF7 cells, HepG2 cells, human liver tissue, MCF-7 cells, rat liver tissue

IP: MCF-7 cells,

IHC: human lung cancer tissue,

IF: HepG2 cells,

Background Information

PMPCB (Mitochondrial-processing peptidase subunit beta) is also named as MPPB, P-52 and belongs to the peptidase M16 family. It cleaves presequences (transit peptides) from mitochondrial protein precursors. It is a mitochondrial matrix marker and Tom70, cytochrome c heme lyase (CCHL) are markers for outer membrane, intermembrane space (PMID:12574118).

Notable Publications

Author	Pubmed ID	Journal	Application
Olga Zurita Rendón	30061372	Mol Cell Biol	
Clément A Gautier	27206984	Hum Mol Genet	WB
Shotaro Saita	28288130	Nat Cell Biol	WB

Storage

Storage:

Store at -20°C. Stable for one year after shipment.

Storage Buffer:

PBS with 0.02% sodium azide and 50% glycerol pH 7.3.

Aliquoting is unnecessary for -20°C storage

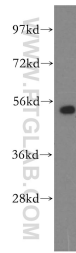
For technical support and original validation data for this product please contact:

T: 1 (888) 4PTGLAB (1-888-478-4522) (toll free in USA), or 1(312) 455-8498 (outside USA)

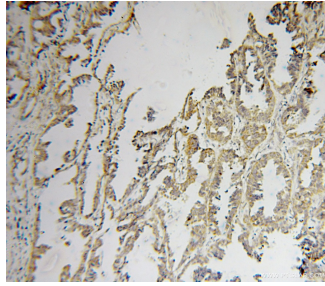
E: proteintech@ptglab.com
W: ptglab.com

This product is exclusively available under Proteintech Group brand and is not available to purchase from any other manufacturer.

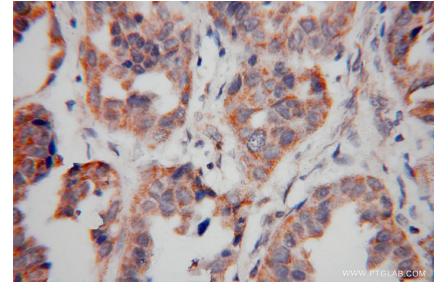
Selected Validation Data



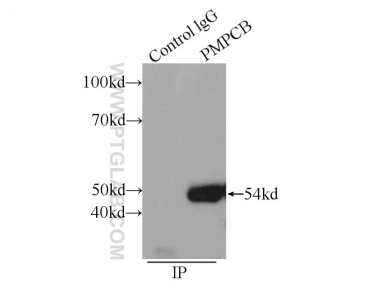
MCF7 cells were subjected to SDS PAGE followed by western blot with 16064-1-AP (PMPCB antibody) at dilution of 1:500 incubated at room temperature for 1.5 hours.



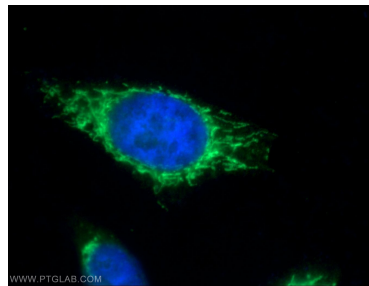
Immunohistochemical analysis of paraffin-embedded human lung cancer using 16064-1-AP (PMPCB antibody) at dilution of 1:100 (under 10x lens).



Immunohistochemical analysis of paraffin-embedded human lung cancer using 16064-1-AP (PMPCB antibody) at dilution of 1:100 (under 40x lens).



IP Result of anti-PMPCB (IP:16064-1-AP, 3ug; Detection:16064-1-AP 1:500) with MCF-7 cells lysate 2560ug.



Immunofluorescent analysis of HepG2 cells using 16064-1-AP (PMPCB antibody) at dilution of 1:25 and Alexa Fluor 488-conjugated AffiniPure Goat Anti-Rabbit IgG(H+L).