

For Research Use Only

# RPL23 Polyclonal antibody

Catalog Number: 16086-1-AP

Featured Product

9 Publications



## Basic Information

**Catalog Number:**

16086-1-AP

**Size:**

150UL, Concentration: 450 µg/ml by Nanodrop and 333 µg/ml by Bradford method using BSA as the standard;

**Source:**

Rabbit

**Isotype:**

IgG

**Immunogen Catalog Number:**

AG9120

**GenBank Accession Number:**

BC010114

**GeneID (NCBI):**

9349

**Full Name:**

ribosomal protein L23

**Calculated MW:**

140 aa, 15 kDa

**Observed MW:**

15 kDa

**Purification Method:**

Antigen affinity purification

**Recommended Dilutions:**

WB 1:500-1:2000

IHC 1:50-1:500

## Applications

**Tested Applications:**

IHC, WB, ELISA

**Cited Applications:**

IF, IHC, WB

**Species Specificity:**

human, mouse, rat

**Cited Species:**

human, mouse, rat

**Note-IHC: suggested antigen retrieval with TE buffer pH 9.0; (\*) Alternatively, antigen retrieval may be performed with citrate buffer pH 6.0**

**Positive Controls:**

WB : BxPC-3 cells, PC-3 cells

IHC : human brain tissue,

## Background Information

Ribosomes, the organelles that catalyze protein synthesis, consist of a small 40S subunit and a large 60S subunit. Together these subunits are composed of 4 RNA species and approximately 80 structurally distinct proteins [PMID:9582194]. RPL23 is a component of the 60S large ribosomal subunit that interacts functionally with murine double minute 2 protein (MDM2 or HDM2 in humans). Upon binding to MDM2, RPL23 inhibits MDM2-mediated p53 degradation, thus activating p53 and inducing cellular apoptosis [PMID:15314174]. Intriguingly, RPL23 has also been suggested to be a negative regulator of apoptosis by suppressing the Miz1-induced transcription of the cell cycle inhibitors p15INK4B and p21CIP1 [PMID:19160485].

## Notable Publications

Author	Pubmed ID	Journal	Application
Wong Chi C CC	21803848	Blood	WB
Yuekun Qi	28539603	Sci Rep	WB, IHC
Harrison Tudor Evans	31118249	EMBO J	IF

## Storage

**Storage:**

Store at -20°C. Stable for one year after shipment.

**Storage Buffer:**

PBS with 0.02% sodium azide and 50% glycerol pH 7.3.

Aliquoting is unnecessary for -20°C storage

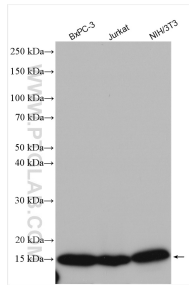
For technical support and original validation data for this product please contact:

T: 1 (888) 4PTGLAB (1-888-478-4522) (toll free in USA), or 1(312) 455-8498 (outside USA)

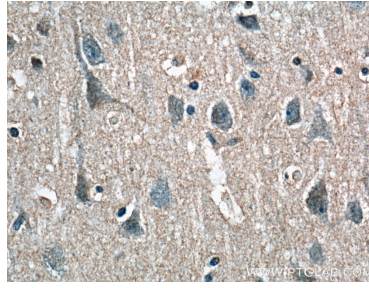
E: proteintech@ptglab.com  
W: ptglab.com

**This product is exclusively available under Proteintech Group brand and is not available to purchase from any other manufacturer.**

## Selected Validation Data



Various lysates were subjected to SDS PAGE followed by western blot with 16086-1-AP (RPL23 antibody) at dilution of 1:1000 incubated at room temperature for 1.5 hours.



Immunohistochemical analysis of paraffin-embedded human brain tissue slide using 16086-1-AP (RPL23 Antibody) at dilution of 1:200 (under 40x lens).