

For Research Use Only

PPP1R8 Polyclonal antibody

Catalog Number: 16115-1-AP



Basic Information

Catalog Number: 16115-1-AP	GenBank Accession Number: BC013360	Purification Method: Antigen affinity purification
Size: 150ul, Concentration: 550 ug/ml by Nanodrop and 367 ug/ml by Bradford method using BSA as the standard;	GeneID (NCBI): 5511	Recommended Dilutions: WB 1:500-1:1000
Source: Rabbit	UNIPROT ID: Q12972	IHC 1:20-1:200
Isotype: IgG	Full Name: protein phosphatase 1, regulatory (inhibitor) subunit 8	IF/ICC 1:50-1:500
Immunogen Catalog Number: AG9041	Calculated MW: 209 aa, 23 kDa	
	Observed MW: 47 kDa, 28 kDa, 19 kDa	

Applications

Tested Applications: WB, IHC, IF/ICC, ELISA	Positive Controls:
Species Specificity: human, mouse, rat	WB: PC-3 cells, HepG2 cells
Note-IHC: suggested antigen retrieval with TE buffer pH 9.0; (*) Alternatively, antigen retrieval may be performed with citrate buffer pH 6.0	IHC: human kidney tissue, human spleen tissue, human testis tissue
	IF/ICC: HepG2 cells,

Background Information

PPP1R8, also named as ARD1, NIPP1, is a 351 amino acid protein, which has a basic N- and C-terminal and an acidic central domain. PPP1R8 is ubiquitously expressed, with highest levels in heart and skeletal muscle, followed by brain, placenta, lung, liver and pancreas. PPP1R8 has RNA-binding activity but does not cleave RNA and may target PP-1 to RNA-associated substrates and may also be involved in pre-mRNA splicing. PPP1R8 exists many isoforms and molecular weight of modified isoforms is about 18 kDa, 28 kDa and 47 kDa.

Storage

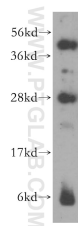
Storage:
Store at -20°C. Stable for one year after shipment.
Storage Buffer:
PBS with 0.02% sodium azide and 50% glycerol pH 7.3.
Aliquoting is unnecessary for -20°C storage

*** 20ul sizes contain 0.1% BSA

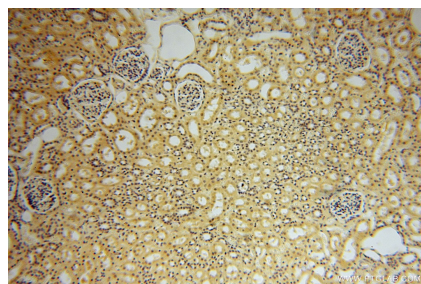
For technical support and original validation data for this product please contact:
T: 1 (888) 4PTGLAB (1-888-478-4522) (toll free in USA), or 1(312) 455-8498 (outside USA)
E: proteintech@ptglab.com
W: ptglab.com

This product is exclusively available under Proteintech Group brand and is not available to purchase from any other manufacturer.

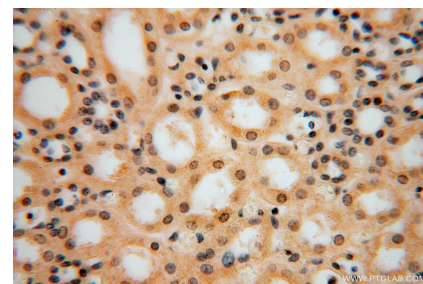
Selected Validation Data



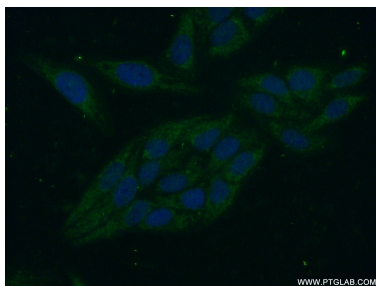
PC-3 cells were subjected to SDS PAGE followed by western blot with 16115-1-AP (PPP1R8 antibody) at dilution of 1:300 incubated at room temperature for 1.5 hours.



Immunohistochemical analysis of paraffin-embedded human kidney using 16115-1-AP (PPP1R8 antibody) at dilution of 1:50 (under 10x lens).



Immunohistochemical analysis of paraffin-embedded human kidney using 16115-1-AP (PPP1R8 antibody) at dilution of 1:50 (under 40x lens).



Immunofluorescent analysis of (-20°C Ethanol) fixed HepG2 cells using 16115-1-AP (PPP1R8 antibody) at dilution of 1:50 and Alexa Fluor 488-conjugated Goat Anti-Rabbit IgG(H+L).