

CLMP Polyclonal ANTIBODY

Catalog Number: 16127-1-AP

Basic Information

Catalog Number: 16127-1-AP	GenBank Accession Number: BC009371	Recommended Dilutions: WB 1:500-1:1000
Size: 23 µg/150 µl	GeneID (NCBI): 79827	
Source: Rabbit	Full Name: adipocyte-specific adhesion molecule	
Isotype: IgG	Calculated MW: 373aa, 41 kDa	
Purification Method: Antigen affinity purification	Observed MW: 45 kDa	
Immunogen Catalog Number: AC9111		

Applications

Tested Applications:

WB, ELISA

Species Specificity:

human,mouse,rat

Note: suggested antigen retrieval with TE buffer pH 9.0; (*) Alternatively, antigen retrieval may be performed with citrate buffer pH 6.0

Positive Controls:

WB : mouse brain tissue, 3T3-L1 cells, rat brain tissue

Background Information

CLMP (Coxsackie- and adenovirus receptor-like membrane protein), also known as ACAM (adipocyte adhesion molecule) or ASAM is a member of the CTX (cortical thymocyte marker in Xenopus) family of proteins. CTX family proteins are type I transmembrane proteins within the Ig superfamily that localize to junctional complexes between endothelial and epithelial cells and may play a role in cell-cell adhesion. CLMP is predominantly expressed in epithelial cells within different tissues and in the white adipose tissue. It may be involved in the cell-cell adhesion and may play a role in adipocyte differentiation and development of obesity.

Notable Publications

Author	Pubmed ID	Journal	Application
--------	-----------	---------	-------------

Storage

Storage:

Store at -20°C. Stable for one year after shipment.

Storage Buffer:

PBS with 0.1% sodium azide and 50% glycerol pH 7.3.

Aliquoting is unnecessary for -20°C storage

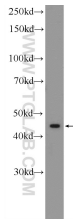
For technical support and original validation data for this product please contact:

T: 1 (888) 4PTGLAB (1-888-478-4522) (toll free in USA), or 1(312) 455-8498 (outside USA)

E: proteintech@ptglab.com
W: ptglab.com

This product is exclusively available under Proteintech Group brand and is not available to purchase from any other manufacturer.

Selected Validation Data



mouse brain tissue were subjected to SDS PAGE followed by western blot with 16127-1-AP(CLMP antibody at dilution of 1:600 incubated at room temperature for 1.5 hours