

For Research Use Only

LAD1 Polyclonal antibody

Catalog Number: 16136-1-AP



Basic Information

Catalog Number: 16136-1-AP	GenBank Accession Number: BC009742	Purification Method: Antigen affinity purification
Size: 150UL, Concentration: 500 µg/ml by Nanodrop and 307 µg/ml by Bradford method using BSA as the standard;	GeneID (NCBI): 3898	Recommended Dilutions: WB 1:2000-1:16000 IHC 1:500-1:2000
Source: Rabbit	Full Name: ladinin 1	
Isotype: IgG	Calculated MW: 517 aa, 57 kDa	
Immunogen Catalog Number: AG9159	Observed MW: 57 kDa	

Applications

Tested Applications:

IHC, WB, ELISA

Species Specificity:

human, mouse

Note-IHC: suggested antigen retrieval with TE buffer pH 9.0; (*) Alternatively, antigen retrieval may be performed with citrate buffer pH 6.0

Positive Controls:

WB : MCF-7 cells,

IHC : human colon cancer tissue,

Background Information

Ladinin-1, also named as LADA, or LAD1, is an anchoring filament protein which is a component of the basement membrane zone. It is a novel component of the basement membranes and may function in contributing to the stability of the association of the epithelial layers with the underlying mesenchyme. Human ladinin is an autoantigen associated with linear IgA disease. It is a secreted protein. Immunohistochemical staining of 16136-1-AP shows strong extracellular matrix positivity in human testis. The predicted MW of this protein is 57 kDa.

Storage

Storage:

Store at -20°C. Stable for one year after shipment.

Storage Buffer:

PBS with 0.02% sodium azide and 50% glycerol pH 7.3.

Aliquoting is unnecessary for -20°C storage

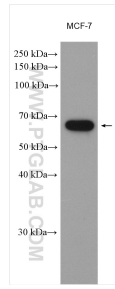
For technical support and original validation data for this product please contact:

T: 1 (888) 4PTGLAB (1-888-478-4522) (toll free in USA), or 1(312) 455-8498 (outside USA)

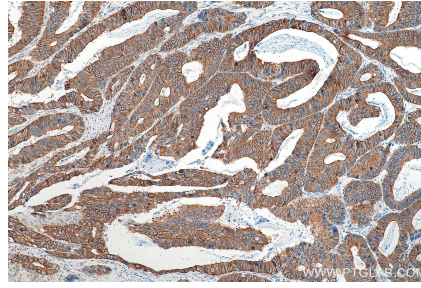
E: proteintech@ptglab.com
W: ptglab.com

This product is exclusively available under Proteintech Group brand and is not available to purchase from any other manufacturer.

Selected Validation Data



MCF-7 cells were subjected to SDS PAGE followed by western blot with 16136-1-AP (LAD1 antibody) at dilution of 1:8000 incubated at room temperature for 1.5 hours.



Immunohistochemical analysis of paraffin-embedded human colon cancer tissue slide using 16136-1-AP (LAD1 antibody) at dilution of 1:1000 (under 10x lens). Heat mediated antigen retrieval with Tris-EDTA buffer (pH 9.0).