

For Research Use Only

MRPS18B Polyclonal antibody

Catalog Number: 16139-1-AP

58 Publications



Basic Information

Catalog Number:

16139-1-AP

Size:

150ul, Concentration: 800 ug/ml by Nanodrop and 380 ug/ml by Bradford method using BSA as the standard;

Source:

Rabbit

Isotype:

IgG

Immunogen Catalog Number:

AG9198

GenBank Accession Number:

BC005373

GeneID (NCBI):

28973

UNIPROT ID:

Q9Y676

Full Name:

mitochondrial ribosomal protein S18B

Calculated MW:

258 aa, 29 kDa

Observed MW:

29 kDa

Purification Method:

Antigen affinity purification

Recommended Dilutions:

WB: 1:2000-1:12000

IP: 0.5-4.0 ug for 1.0-3.0 mg of total protein lysate

IHC: 1:50-1:500

FC (Intra): 0.40 ug per 10⁶ cells in a 100 µl suspension

Applications

Tested Applications:

WB, IHC, FC (Intra), IP, ELISA

Cited Applications:

WB, IHC, IF, ColP

Species Specificity:

human, mouse, rat

Cited Species:

human, mouse, rat

Note-IHC: suggested antigen retrieval with TE buffer pH 9.0; (*) Alternatively, antigen retrieval may be performed with citrate buffer pH 6.0

Positive Controls:

WB: A549 cells, mouse liver tissue, rat heart tissue, HEK-293 cells, MCF-7 cells, PC-3 cells, SH-SY5Y cells

IP: HeLa cells,

IHC: human breast cancer tissue, human liver tissue

FC (Intra): A549 cells,

Background Information

MRPS18B, also named as S18mt-b, MRP-S18-2 and C6orf14, belongs to the ribosomal protein S18P family. It is a component of the mitochondrial ribosome small subunit (28S) which comprises a 12S rRNA and about 30 distinct proteins. This antibody recognizes specifically the 29 kd MRPS18B protein.

Notable Publications

Author	Pubmed ID	Journal	Application
Olga Zurita Rendón	30061372	Mol Cell Biol	
Benedetta Ruzzenente	30252186	Hum Mutat	WB
Uwe Richter	26504172	J Cell Biol	WB

Storage

Storage:

Store at -20°C. Stable for one year after shipment.

Storage Buffer:

PBS with 0.02% sodium azide and 50% glycerol, pH7.3

Aliquoting is unnecessary for -20°C storage

*** 20ul sizes contain 0.1% BSA

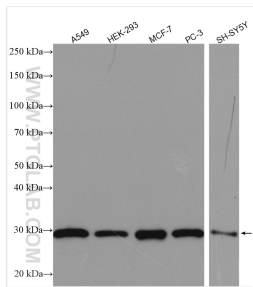
For technical support and original validation data for this product please contact:

T: 1 (888) 4PTGLAB (1-888-478-4522) (toll free in USA), or 1(312) 455-8498 (outside USA)

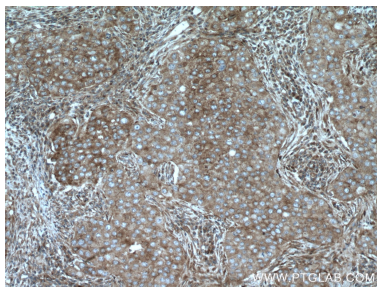
E: proteintech@ptglab.com
W: ptglab.com

This product is exclusively available under Proteintech Group brand and is not available to purchase from any other manufacturer.

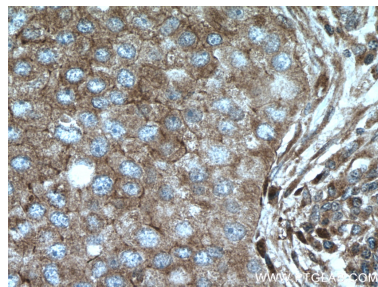
Selected Validation Data



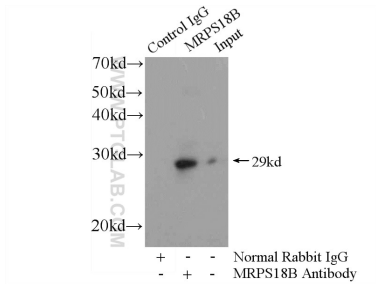
Various lysates were subjected to SDS PAGE followed by western blot with 16139-1-AP (MRPS18B antibody) at dilution of 1:6000 incubated at room temperature for 1.5 hours.



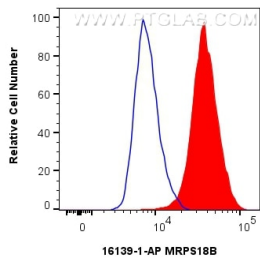
Immunohistochemical analysis of paraffin-embedded human breast cancer tissue slide using 16139-1-AP (MRPS18B antibody) at dilution of 1:200 (under 10x lens. Heat mediated antigen retrieval with Tris-EDTA buffer (pH 9.0).



Immunohistochemical analysis of paraffin-embedded human breast cancer tissue slide using 16139-1-AP (MRPS18B antibody) at dilution of 1:200 (under 40x lens. Heat mediated antigen retrieval with Tris-EDTA buffer (pH 9.0).



IP result of anti-MRPS18B (IP:16139-1-AP, 4ug; Detection:16139-1-AP 1:1000) with HeLa cells lysate 2800ug.



1x10⁶ A549 cells were intracellularly stained with 0.4 ug MRPS18B Polyclonal antibody (16139-1-AP) and CoraLite® 488-Conjugated Goat Anti-Rabbit IgG(H+L) (SA00013-2)(red), or 0.4 ug Rabbit IgG control Rabbit PolyAb (30000-0-AP) (blue). Cells were fixed with 4% PFA and permeabilized with Flow Cytometry Perm Buffer (PF00011-C).