

For Research Use Only

# LYPLAL1 Polyclonal antibody

Catalog Number: 16146-1-AP

Featured Product

4 Publications



## Basic Information

### Catalog Number:

16146-1-AP

### Size:

150ul, Concentration: 350 ug/ml by Nanodrop and 233 ug/ml by Bradford method using BSA as the standard;

### Source:

Rabbit

### Isotype:

IgG

### Immunogen Catalog Number:

AG9271

### GenBank Accession Number:

BC016711

### GeneID (NCBI):

127018

### UNIPROT ID:

Q5VWZ2

### Full Name:

lysophospholipase-like 1

### Calculated MW:

237 aa, 26 kDa

### Observed MW:

26-30 kDa

### Purification Method:

Antigen affinity purification

### Recommended Dilutions:

WB: 1:500-1:3000

IHC: 1:50-1:500

## Applications

### Tested Applications:

WB, IHC, ELISA

### Cited Applications:

WB, IHC

### Species Specificity:

human, mouse, rat

### Cited Species:

human, mouse

### Positive Controls:

WB: HEK-293T cells, HeLa cells

IHC: human liver cancer tissue, mouse kidney tissue, human kidney tissue

**Note-IHC: suggested antigen retrieval with TE buffer pH 9.0; (\*) Alternatively, antigen retrieval may be performed with citrate buffer pH 6.0**

## Background Information

Lysophospholipase-like 1 protein, encoded by LYPLAL1, a 26 kDa cytosol protein which belongs to a subclass of lysophospholipase family. Human genome-wide association studies link variants of the gene encoding this enzyme to fat distribution, waist-to-hip ratio and non-alcoholic fatty liver disease. LYPLAL1 reported to be up-regulated in subcutaneous adipose tissue of obese individuals. (PMID: 25958046, PMID: 27391855, PMID: 21674055)

## Notable Publications

Author	Pubmed ID	Journal	Application
Bernard P Kok	32514184	Nat Chem Biol	WB
Rachel A Watson	29084768	Dis Model Mech	WB
Yizeng Fan	37802025	Mol Cell	WB, IHC

## Storage

### Storage:

Store at -20°C. Stable for one year after shipment.

### Storage Buffer:

PBS with 0.02% sodium azide and 50% glycerol, pH7.3

Aliquoting is unnecessary for -20°C storage

\*\*\* 20ul sizes contain 0.1% BSA

For technical support and original validation data for this product please contact:

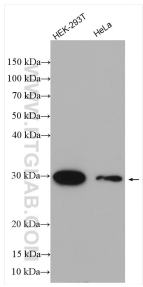
T: 1 (888) 4PTGLAB (1-888-478-4522) (toll free in USA), or 1(312) 455-8498 (outside USA)

E: [proteintech@ptglab.com](mailto:proteintech@ptglab.com)  
W: [ptglab.com](http://ptglab.com)

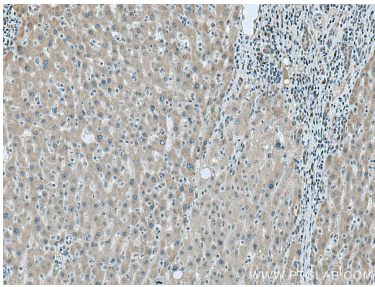
This product is exclusively available under Proteintech Group brand and is not available to purchase from any other manufacturer.



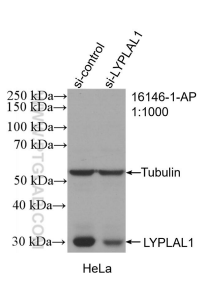
Selected Validation Data



Various lysates were subjected to SDS PAGE followed by western blot with 16146-1-AP (LYPLAL1 antibody) at dilution of 1:1500 incubated at room temperature for 1.5 hours.



Immunohistochemical analysis of paraffin-embedded human liver cancer tissue slide using 16146-1-AP (LYPLAL1 antibody) at dilution of 1:200 (under 10x lens). Heat mediated antigen retrieval with Tris-EDTA buffer (pH 9.0).



WB result of LYPLAL1 antibody (16146-1-AP; 1:1000; incubated at room temperature for 1.5 hours) with sh-Control and sh-LYPLAL1 transfected HeLa cells.