

For Research Use Only

BAG1S/1M/1L Polyclonal antibody



Catalog Number: 16150-1-AP

Featured Product

1 Publications

Basic Information

Catalog Number:

16150-1-AP

Size:

150UL, Concentration: 550 µg/ml by Nanodrop and 400 µg/ml by Bradford method using BSA as the standard;

Source:

Rabbit

Isotype:

IgG

GenBank Accession Number:

NM_004323

GeneID (NCBI):

573

Full Name:

BCL2-associated athanogene

Calculated MW:

26 kDa

Observed MW:

46-50 kDa, 41-46 kDa, 25-33 kDa

Purification Method:

Antigen affinity purification

Recommended Dilutions:

WB 1:500-1:1000

IHC 1:20-1:200

Applications

Tested Applications:

IHC, WB, ELISA

Cited Applications:

IHC, WB

Species Specificity:

human, mouse, rat

Cited Species:

human

Note-IHC: suggested antigen retrieval with TE buffer pH 9.0; (*) Alternatively, antigen retrieval may be performed with citrate buffer pH 6.0

Positive Controls:

WB: mouse brain tissue, Jurkat cells, mouse liver tissue

IHC: human testis tissue, human kidney tissue, human lung tissue, human ovary tissue, human placenta tissue, human spleen tissue

Background Information

BAG1 have been identified that modulate gene transcription through poorly defined mechanisms. Four isoforms of the BAG1 protein (BAG1S, BAG1, BAG1M and BAG1L) can be produced from a common mRNA by use of alternative translation initiation sites, including a non-canonical CTG codon in one instance. The longest, BAG1L (Mr ~50K), contains a nuclear localization signal (NLS) and resides in the nucleus, whereas BAG1M (Mr ~46K) has an incomplete NLS and distributes mainly in cytosol, unless dragged into the nucleus through interactions with other. Distribution of BAG1S(p33) is not clear yet. This antibody recognizes all the isoforms of BAG1, includes GAG1L, BAG1V, BAG1M and BAG1S.

Notable Publications

Author	Pubmed ID	Journal	Application
Wenbai Huang	26846101	Tumour Biol	WB, IHC

Storage

Storage:

Store at -20°C. Stable for one year after shipment.

Storage Buffer:

PBS with 0.02% sodium azide and 50% glycerol pH 7.3.

Aliquoting is unnecessary for -20°C storage

For technical support and original validation data for this product please contact:

T: 1 (888) 4PTGLAB (1-888-478-4522) (toll free in USA), or 1(312) 455-8498 (outside USA)

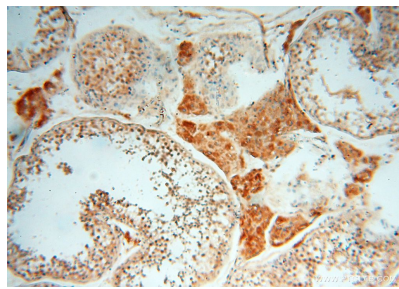
E: proteintech@ptglab.com
W: ptglab.com

This product is exclusively available under Proteintech Group brand and is not available to purchase from any other manufacturer.

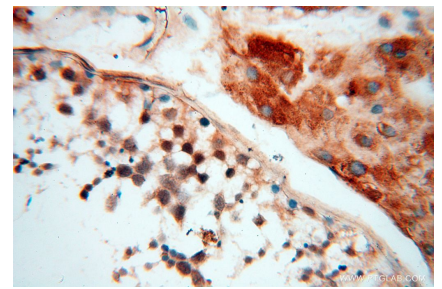
Selected Validation Data



mouse brain tissue were subjected to SDS PAGE followed by western blot with 16150-1-AP (BAG1S/1M/1L antibody) at dilution of 1:800 incubated at room temperature for 1.5 hours.



Immunohistochemical analysis of paraffin-embedded human testis using 16150-1-AP (BAG1S/1M/1L antibody) at dilution of 1:50 (under 10x lens).



Immunohistochemical analysis of paraffin-embedded human testis using 16150-1-AP (BAG1S/1M/1L antibody) at dilution of 1:50 (under 40x lens).