

For Research Use Only

KRAS-2A-specific Polyclonal antibody



Catalog Number: 16156-1-AP

1 Publications

Basic Information

Catalog Number:

16156-1-AP

Size:

150ul , Concentration: 1400 µg/ml by Nanodrop and 693 µg/ml by Bradford method using BSA as the standard;

Source:

Rabbit

Isotype:

IgG

GenBank Accession Number:

NM_033360

GeneID (NCBI):

3845

Full Name:

v-Ki-ras2 Kirsten rat sarcoma viral oncogene homolog

Calculated MW:

21 kDa

Observed MW:

21-24 kDa

Purification Method:

Antigen affinity purification

Recommended Dilutions:

WB 1:500-1:1000

IF 1:50-1:500

Applications

Tested Applications:

FC, IF, WB, ELISA

Cited Applications:

WB

Species Specificity:

human

Cited Species:

human

Positive Controls:

WB : NIH/3T3 cells,

IF : SH-SY5Y cells,

Background Information

RAS (derived from 'Rat Sarcoma' virus) gene family includes KRAS, HRAS, and NRAS. These genes encode very similar 21 kDa proteins and are homologs of rodent sarcoma virus genes that have transforming abilities. KRAS has two isoforms, 2A and 2B. This antibody is specific for KRAS-2A, which also named as KRAS-4A .

Notable Publications

| Author | Pubmed ID | Journal | Application |
|-------------|-----------|----------------|-------------|
| Sascha Röth | 32668202 | Cell Chem Biol | WB |

Storage

Storage:

Store at -20°C. Stable for one year after shipment.

Storage Buffer:

PBS with 0.02% sodium azide and 50% glycerol pH 7.3.

Aliquoting is unnecessary for -20°C storage

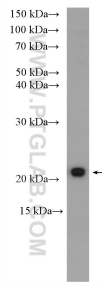
For technical support and original validation data for this product please contact:

T: 1 (888) 4PTGLAB (1-888-478-4522) (toll free in USA), or 1(312) 455-8498 (outside USA)

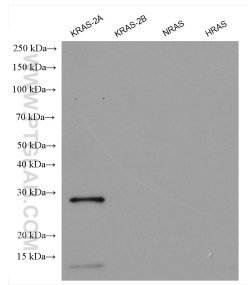
E: proteintech@ptglab.com
W: ptglab.com

This product is exclusively available under Proteintech Group brand and is not available to purchase from any other manufacturer.

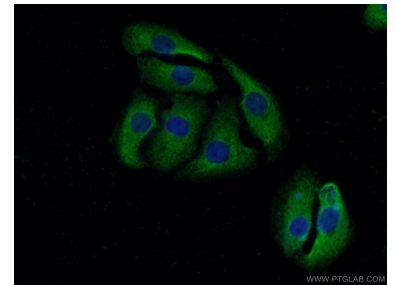
Selected Validation Data



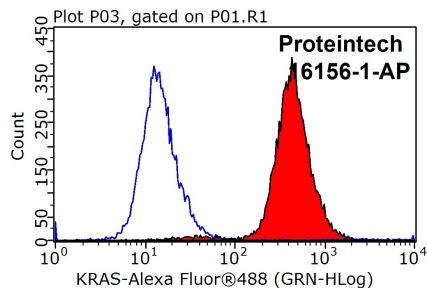
NIH/3T3 cells were subjected to SDS PAGE followed by western blot with 16156-1-AP (KRAS-2A-specific antibody) at dilution of 1:600 incubated at room temperature for 1.5 hours.



Recombinant proteins (ag27444 (6*His tag-KRAS-2A), ag21645(6*His tag-KRAS-2B), ag29746(6*His tag-NRAS), ag23265(GST-HRAS)) were subjected to SDS PAGE followed by western blot with 16155-1-AP (KRAS-2B-specific antibody) at dilution of 1:2000 incubated at room temperature for 1.5 hours.



Immunofluorescent analysis of (-20 Acetone) fixed SH-SY5Y cells using 16156-1-AP (KRAS-2A-specific antibody) at dilution of 1:50 and Alexa Fluor 488-conjugated AffiniPure Goat Anti-Rabbit IgG(H+L).



1X10⁶ HeLa cells were stained with 0.2ug KRAS-2A-specific antibody (16156-1-AP, red) and control antibody (blue). Fixed with 90% MeOH blocked with 3% BSA (30 min). Alexa Fluor 488-conjugated AffiniPure Goat Anti-Rabbit IgG(H+L) with dilution 1:1000.