

For Research Use Only

Lin28A-specific Polyclonal antibody

Catalog Number: 16177-1-AP

Featured Product

13 Publications



Basic Information

Catalog Number:

16177-1-AP

Size:

150ul, Concentration: 253 ug/ml by Nanodrop and 253 ug/ml by Bradford method using BSA as the standard;

Source:

Rabbit

Isotype:

IgG

GenBank Accession Number:

NM_024674

GeneID (NCBI):

79727

UNIPROT ID:

Q9H9Z2

Full Name:

lin-28 homolog (C. elegans)

Calculated MW:

23 kDa

Observed MW:

28 kDa

Purification Method:

Antigen affinity purification

Recommended Dilutions:

WB: 1:200-1:1000

IHC: 1:20-1:200

Applications

Tested Applications:

WB, IHC, ELISA

Cited Applications:

WB, IHC, IF

Species Specificity:

human, mouse, rat

Cited Species:

human, mouse, rat

Positive Controls:

WB: hESC cells, human brain tissue, human heart tissue, NCCIT cell, mouse liver tissue

IHC: human small intestine tissue, human ovary tissue, human heart tissue, human testis tissue, human spleen tissue, human lung tissue, human brain tissue

Note-IHC: suggested antigen retrieval with TE buffer pH 9.0; (*) Alternatively, antigen retrieval may be performed with citrate buffer pH 6.0

Background Information

LIN28 is one of the four key human factors (OCT4, SOX2, NANOG and LIN28) used to reprogram human fibroblasts to an embryonic stem (ES) cell-like state known as the induced pluripotent stem (Ips) cell. LIN28 is a marker of undifferentiated human embryonic stem cells and a cytoplasmic mRNA-binding protein that binds to and enhances the translation of the IGF2 mRNA. LIN28 has also been shown to bind to the let-7 pre-miRNA and block production of the mature let-7 microRNA in mouse embryonic stem cells. Affinity purified rabbit anti-LIN28 can be used to demonstrate pluripotency of ES and Ips cells, and to detect LIN28 transgene expression in the process of reprogramming. This antibody is a rabbit polyclonal antibody raised against a peptide mapping within human LIN28. This antibody recognizes Lin28A specifically.

Notable Publications

Author	Pubmed ID	Journal	Application
Kelvin Pieknell	34556809	Cell Death Differ	WB
Xinxin Si	36382664	Pharmacology	IHC
Yang Liu	33200449	FASEB J	WB, IF

Storage

Storage:

Store at -20°C. Stable for one year after shipment.

Storage Buffer:

PBS with 0.02% sodium azide and 50% glycerol, pH7.3

Aliquoting is unnecessary for -20°C storage

*** 20ul sizes contain 0.1% BSA

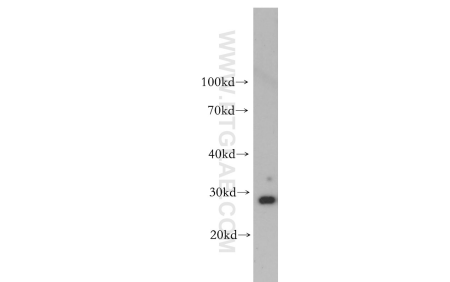
For technical support and original validation data for this product please contact:

T: 1 (888) 4PTGLAB (1-888-478-4522) (toll free in USA), or 1(312) 455-8498 (outside USA)

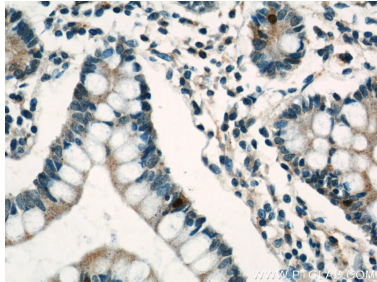
E: proteintech@ptglab.com
W: ptglab.com

This product is exclusively available under Proteintech Group brand and is not available to purchase from any other manufacturer.

Selected Validation Data



hESC cells were subjected to SDS PAGE followed by western blot with 16177-1-AP (Lin28A-specific antibody) at dilution of 1:300 incubated at room temperature for 1.5 hours.



Immunohistochemical analysis of paraffin-embedded human small intestine using 16177-1-AP (Lin28A-specific antibody) at dilution of 1:50 (under 40x lens).