

For Research Use Only

# Lin28B-specific Polyclonal ANTIBODY



Catalog Number: 16178-1-AP

9 Publications

## Basic Information

Catalog Number:  
16178-1-AP

Size:  
20 µg/150 µl

Source:  
Rabbit

Isotype:  
IgG

Purification Method:  
Antigen affinity purification

Immunogen Catalog Number:

GenBank Accession Number:  
NM\_001004317

GeneID (NCBI):  
389421

Full Name:  
lin-28 homolog B (C. elegans)

Calculated MW:  
28 kDa

Observed MW:

Recommended Dilutions:

IHC 1:20-1:200

IF 1:10-1:100

## Applications

Tested Applications:  
IF, IHC, ELISA

Cited Applications:  
IHC, WB

Species Specificity:  
human, mouse

Cited Species:  
human, mouse, rat

**Note: suggested antigen retrieval with TE buffer pH 9.0; (\*) Alternatively, antigen retrieval may be performed with citrate buffer pH 6.0**

Positive Controls:

IHC : human testis tissue; human brain tissue, human liver cancer tissue, human lung tissue, human kidney tissue, human spleen tissue

IF : HepG2 cells;

## Background Information

LIN28B, also named as CSDD2, belongs to the lin-28 family. It acts as a suppressor of microRNA (miRNA) biogenesis by specifically binding the precursor let-7 (pre-let-7). LIN28B is specifically expressed in embryonic muscle, neurons, and epithelia, as well as in embryonic carcinoma cells. However, it is suppressed in most adult tissues except for skeletal and cardiac muscle. LIN28B shares 78% sequence identity with LIN28A. This antibody is specific to LIN28B.

## Notable Publications

Author	Pubmed ID	Journal	Application
Yoshikawa Takeshi T	24023722	PLoS One	WB,IHC
S Sangiao-Alv arellos	26494358	Sci Rep	IHC
Domenico Albino	27197175	Cancer Res	WB

## Storage

Storage:

Store at -20°C. Stable for one year after shipment.

Storage Buffer:

PBS with 0.02% sodium azide and 50% glycerol pH 7.3.

Aliquoting is unnecessary for -20°C storage

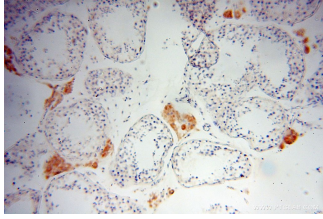
For technical support and original validation data for this product please contact:

T: 1 (888) 4PTGLAB (1-888-478-4522) (toll free in USA), or 1(312) 455-8498 (outside USA)

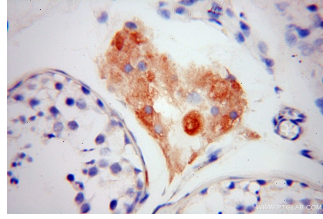
E: [proteintech@ptglab.com](mailto:proteintech@ptglab.com)  
W: [ptglab.com](http://ptglab.com)

This product is exclusively available under Proteintech Group brand and is not available to purchase from any other manufacturer.

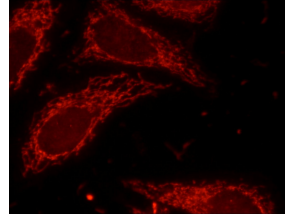
## Selected Validation Data



Immunohistochemical of paraffin-embedded human testis using 16178-1-AP(Lin28B-specific antibody) at dilution of 1:50 (under 10x lens)



Immunohistochemical of paraffin-embedded human testis using 16178-1-AP(Lin28B-specific antibody) at dilution of 1:50 (under 40x lens)



Immunofluorescent analysis of HepG2 cells using 16178-1-AP(Lin28B-specific antibody) at dilution of 1:25 and Rhodamine-Goat anti-Rabbit IgG