

For Research Use Only

Claudin 4-specific Polyclonal antibody



Catalog Number: 16195-1-AP

13 Publications

Basic Information

Catalog Number:

16195-1-AP

Size:

150ul , Concentration: 300 µg/ml by Nanodrop and 267 µg/ml by Bradford method using BSA as the standard;

Source:

Rabbit

Isotype:

IgG

GenBank Accession Number:

NM_001305

GeneID (NCBI):

1364

Full Name:

claudin 4

Calculated MW:

22 kDa

Observed MW:

22 kDa

Purification Method:

Antigen affinity purification

Recommended Dilutions:

WB 1:500-1:1000

IP 0.5-4.0 ug for IP and 1:200-1:1000 for WB

IHC 1:50-1:500

Applications

Tested Applications:

IHC, IP, WB, ELISA

Cited Applications:

IF, IHC, RIP, WB

Species Specificity:

human, mouse, rat

Cited Species:

human, mouse, pig, rat

Note-IHC: suggested antigen retrieval with TE buffer pH 9.0; (*) Alternatively, antigen retrieval may be performed with citrate buffer pH 6.0

Positive Controls:

WB : mouse small intestine tissue, human placenta tissue, MDA-MB-453s cells

IP : human placenta tissue,

IHC : human breast cancer tissue, human ovary tumor tissue

Background Information

Claudins are a family of proteins that are the most important components of the tight junctions, where they establish the paracellular barrier that controls the flow of molecules in the intercellular space between the cells of an epithelium. 23 claudins have been identified. They are small (20-27 kDa) proteins with very similar structure. They have four transmembrane domains, with the N-terminus and the C-terminus in the cytoplasm. This antibody is specifically against claudin 4.

Notable Publications

Author	Pubmed ID	Journal	Application
Yijin Xiang	34616481	Evid Based Complement Alternat Med	WB
Yuhang Jin	34338265	Food Funct	WB
Junrong Wu	32937690	J Hazard Mater	WB,IHC

Storage

Storage:

Store at -20°C. Stable for one year after shipment.

Storage Buffer:

PBS with 0.02% sodium azide and 50% glycerol pH 7.3.

Aliquoting is unnecessary for -20°C storage

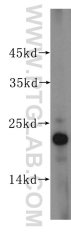
For technical support and original validation data for this product please contact:

T: 1 (888) 4PTGLAB (1-888-478-4522) (toll free in USA), or 1(312) 455-8498 (outside USA)

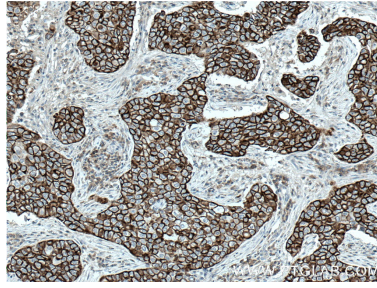
E: proteintech@ptglab.com
W: ptglab.com

This product is exclusively available under Proteintech Group brand and is not available to purchase from any other manufacturer.

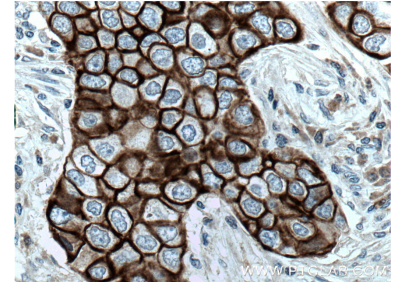
Selected Validation Data



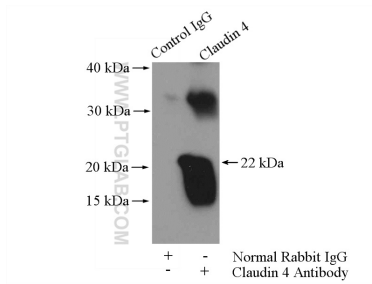
mouse small intestine tissue were subjected to SDS PAGE followed by western blot with 16195-1-AP (CLDN4-specific antibody) at dilution of 1:300 incubated at room temperature for 1.5 hours.



Immunohistochemical analysis of paraffin-embedded human breast cancer tissue slide using 16195-1-AP (Claudin 4-specific antibody) at dilution of 1:200 (under 10x lens. Heat mediated antigen retrieval with Tris-EDTA buffer (pH 9.0).



Immunohistochemical analysis of paraffin-embedded human breast cancer tissue slide using 16195-1-AP (Claudin 4-specific antibody) at dilution of 1:200 (under 40x lens. Heat mediated antigen retrieval with Tris-EDTA buffer (pH 9.0).



IP Result of anti-Claudin 4-specific (IP:16195-1-AP, 4ug; Detection:16195-1-AP 1:300) with human placenta tissue lysate 4400ug.