

For Research Use Only

PDGFR α Polyclonal antibody

Catalog Number: 16217-1-AP

3 Publications



Basic Information

Catalog Number:

16217-1-AP

Size:

150 μ l, Concentration: 1000 μ g/ml by Nanodrop and 453 μ g/ml by Bradford method using BSA as the standard;

Source:

Rabbit

Isotype:

IgG

Immunogen Catalog Number:

AG9218

GenBank Accession Number:

BC010927

GeneID (NCBI):

5157

UNIPROT ID:

Q15198

Full Name:

platelet-derived growth factor receptor-like

Calculated MW:

375 aa, 42 kDa

Observed MW:

42 kDa

Purification Method:

Antigen affinity purification

Recommended Dilutions:

WB: 1:500-1:1000

IHC: 1:20-1:200

IF/ICC: 1:20-1:200

FC (Intra): 0.25 μ g per 10⁶ cells in a 100 μ l suspension

Applications

Tested Applications:

WB, IHC, IF/ICC, FC (Intra), ELISA

Cited Applications:

WB, IHC

Species Specificity:

human, mouse, rat

Cited Species:

human

Note-IHC: suggested antigen retrieval with TE buffer pH 9.0; (*) Alternatively, antigen retrieval may be performed with citrate buffer pH 6.0

Positive Controls:

WB: L02 cells, mouse liver tissue

IHC: human liver cancer tissue, mouse liver tissue

IF/ICC: L02 cells,

FC (Intra): HepG2 cells,

Notable Publications

Author	Pubmed ID	Journal	Application
Qin Yang	38848147	Aging (Albany NY)	WB
Shuwen Kuang	38837427	Mol Carcinog	IHC
Michael T H Ng	38374174	Nat Commun	WB

Storage

Storage:

Store at -20°C. Stable for one year after shipment.

Storage Buffer:

PBS with 0.02% sodium azide and 50% glycerol, pH7.3

Aliquoting is unnecessary for -20°C storage

*** 20ul sizes contain 0.1% BSA

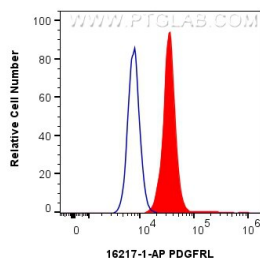
For technical support and original validation data for this product please contact:

T: 1 (888) 4PTGLAB (1-888-478-4522) (toll free in USA), or 1(312) 455-8498 (outside USA)

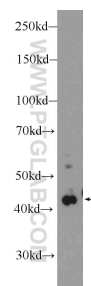
E: proteintech@ptglab.com
W: ptglab.com

This product is exclusively available under Proteintech Group brand and is not available to purchase from any other manufacturer.

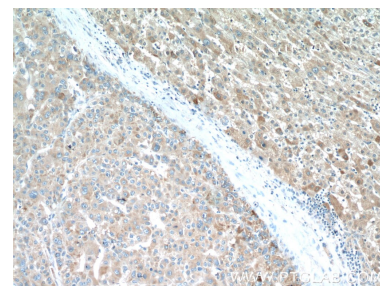
Selected Validation Data



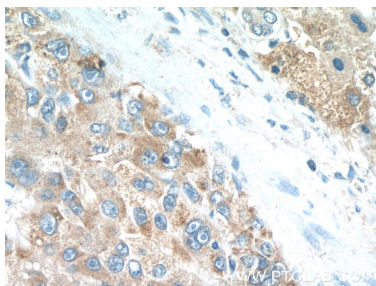
1x10⁶ HepG2 cells were intracellularly stained with 0.25 ug PDGFRL Polyclonal antibody (16217-1-AP) and CoraLite®488-Conjugated Goat Anti-Rabbit IgG(H+L) (SA00013-2)(red), or 0.25 ug Isotype Control (blue). Cells were fixed with 4% PFA and permeabilized with Flow Cytometry Perm Buffer (PF00011-C).



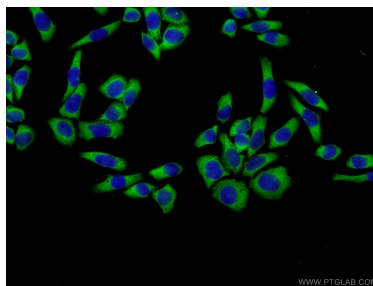
L02 cells were subjected to SDS PAGE followed by western blot with 16217-1-AP (PDGFRL Antibody) at dilution of 1:600 incubated at room temperature for 1.5 hours.



Immunohistochemical analysis of paraffin-embedded human liver cancer tissue slide using 16217-1-AP (PDGFRL Antibody) at dilution of 1:50 (under 10x lens).



Immunohistochemical analysis of paraffin-embedded human liver cancer tissue slide using 16217-1-AP (PDGFRL Antibody) at dilution of 1:50 (under 40x lens).



Immunofluorescent analysis of L02 cells using 16217-1-AP (PDGFRL antibody) at dilution of 1:50 and Alexa Fluor 488-conjugated AffiniPure Goat Anti-Rabbit IgG(H+L).