

For Research Use Only

# MRPL13 Polyclonal antibody

Catalog Number: 16241-1-AP

10 Publications



## Basic Information

### Catalog Number:

16241-1-AP

### Size:

150ul, Concentration: 470 ug/ml by Nanodrop and 293 ug/ml by Bradford method using BSA as the standard;

### Source:

Rabbit

### Isotype:

IgG

### Immunogen Catalog Number:

AG9105

### GenBank Accession Number:

BC009190

### GeneID (NCBI):

28998

### UNIPROT ID:

Q9BYD1

### Full Name:

mitochondrial ribosomal protein L13

### Calculated MW:

178 aa, 21 kDa

### Observed MW:

20-23 kDa

### Purification Method:

Antigen affinity purification

### Recommended Dilutions:

WB: 1:500-1:2000

IP: 0.5-4.0 ug for 1.0-3.0 mg of total protein lysate

IHC: 1:50-1:500

## Applications

### Tested Applications:

WB, IP, IHC, ELISA

### Cited Applications:

WB, IHC

### Species Specificity:

human, mouse, rat, monkey

### Cited Species:

human, mouse

**Note-IHC: suggested antigen retrieval with TE buffer pH 9.0; (\*) Alternatively, antigen retrieval may be performed with citrate buffer pH 6.0**

### Positive Controls:

**WB:** HL-60 cells, HeLa cells, mouse lung tissue, Jurkat cells, COS-7 cells, rat lung tissue

**IP:** mouse lung tissue,

**IHC:** human liver cancer tissue, human breast cancer tissue

## Background Information

MRPL13, also named as 39S ribosomal protein L13, mitochondrial or L13mt, is a 178 amino acid protein, which belongs to the ribosomal protein L13P family. MRPL13 localizes in the mitochondrion and interacts with OXA1L. MRPL13 is involved in mitochondrial proteins biosynthesis, ribosomal structure and biogenesis.

## Notable Publications

Author	Pubmed ID	Journal	Application
Ruona Shi	34774773	Genomics Proteomics Bioinformatics	WB
Ilaria Dalla Rosa	24948607	Nucleic Acids Res	WB
Miaomiao Cai	33658859	Cancer Manag Res	IHC

## Storage

### Storage:

Store at -20°C. Stable for one year after shipment.

### Storage Buffer:

PBS with 0.02% sodium azide and 50% glycerol, pH7.3

Aliquoting is unnecessary for -20°C storage

\*\*\* 20ul sizes contain 0.1% BSA

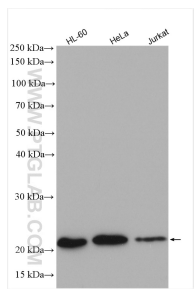
For technical support and original validation data for this product please contact:

T: 1 (888) 4PTGLAB (1-888-478-4522) (toll free in USA), or 1(312) 455-8498 (outside USA)

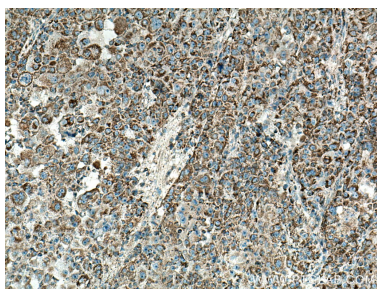
E: [proteintech@ptglab.com](mailto:proteintech@ptglab.com)  
W: [ptglab.com](http://ptglab.com)

This product is exclusively available under Proteintech Group brand and is not available to purchase from any other manufacturer.

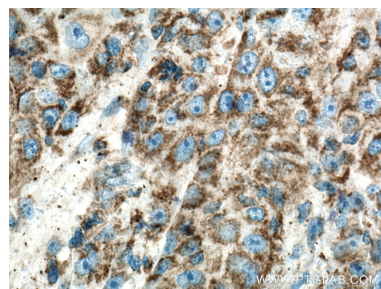
Selected Validation Data



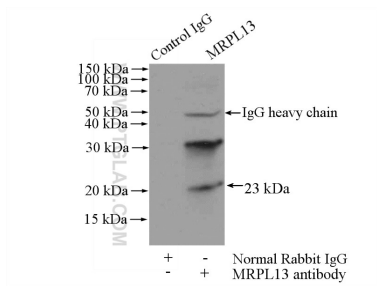
Various lysates were subjected to SDS PAGE followed by western blot with 16241-1-AP (MRPL13 antibody) at dilution of 1:1000 incubated at room temperature for 1.5 hours.



Immunohistochemical analysis of paraffin-embedded human liver cancer tissue slide using 16241-1-AP (MRPL13 antibody) at dilution of 1:200 (under 10x lens). Heat mediated antigen retrieval with Tris-EDTA buffer (pH 9.0).



Immunohistochemical analysis of paraffin-embedded human liver cancer tissue slide using 16241-1-AP (MRPL13 antibody) at dilution of 1:200 (under 40x lens). Heat mediated antigen retrieval with Tris-EDTA buffer (pH 9.0).



IP result of anti-MRPL13 (IP:16241-1-AP, 4ug; Detection:16241-1-AP 1:500) with mouse lung tissue lysate 4000ug.