

For Research Use Only

ATP13A1 Polyclonal antibody

Catalog Number: 16244-1-AP **2 Publications**



Basic Information

Catalog Number:

16244-1-AP

Size:

150ul , Concentration: 360 µg/ml by Nanodrop and 360 µg/ml by Bradford method using BSA as the standard;

Source:

Rabbit

Isotype:

IgG

Immunogen Catalog Number:

AG9174

GenBank Accession Number:

BC009302

GeneID (NCBI):

57130

Full Name:

ATPase type 13A1

Calculated MW:

976 aa, 109 kDa

Observed MW:

109 kDa

Purification Method:

Antigen affinity purification

Recommended Dilutions:

WB 1:1000-1:4000

IP 0.5-4.0 ug for IP and 1:200-1:1000 for WB

IF 1:20-1:200

Applications

Tested Applications:

IF, IP, WB, ELISA

Cited Applications:

WB

Species Specificity:

human, mouse, rat

Cited Species:

human

Positive Controls:

WB : human liver tissue, HepG2 cells, mouse ovary tissue

IP : HeLa cells,

IF : HepG2 cells,

Background Information

Notable Publications

Author	Pubmed ID	Journal	Application
Zhigang Feng	32905774	Cell Rep	WB
Michael J McKenna	32973005	Science	WB

Storage

Storage:

Store at -20°C. Stable for one year after shipment.

Storage Buffer:

PBS with 0.02% sodium azide and 50% glycerol pH 7.3.

Aliquoting is unnecessary for -20°C storage

For technical support and original validation data for this product please contact:

T: 1 (888) 4PTGLAB (1-888-478-4522) (toll free in USA), or 1(312) 455-8498 (outside USA)

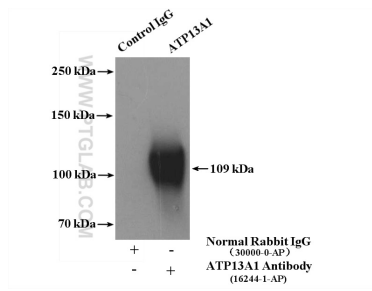
E: proteintech@ptglab.com
W: ptglab.com

This product is exclusively available under Proteintech Group brand and is not available to purchase from any other manufacturer.

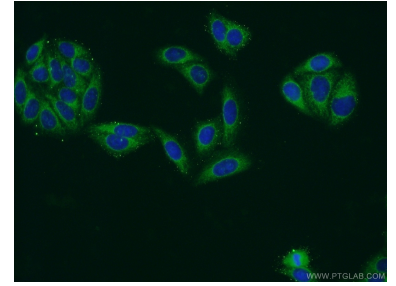
Selected Validation Data



human liver tissue were subjected to SDS PAGE followed by western blot with 16244-1-AP (ATP13A1 antibody) at dilution of 1:500 incubated at room temperature for 1.5 hours.



IP Result of anti-ATP13A1 (IP:16244-1-AP, 4ug; Detection:16244-1-AP 1:300) with HeLa cells lysate 4000ug.



Immunofluorescent analysis of HepG2 cells using 16244-1-AP (ATP13A1 antibody) at dilution of 1:50 and Alexa Fluor 488-conjugated AffiniPure Goat Anti-Rabbit IgG(H+L).