

For Research Use Only

RAP2B Polyclonal antibody

Catalog Number: 16266-1-AP **1 Publications**



Basic Information

Catalog Number: 16266-1-AP	GenBank Accession Number: BC012362	Purification Method: Antigen affinity purification
Size: 150ul, Concentration: 240 µg/ml by Nanodrop and 167 µg/ml by Bradford method using BSA as the standard;	GeneID (NCBI): 5912	Recommended Dilutions: WB 1:1000-1:8000
Source: Rabbit	UNIPROT ID: P61225	
Isotype: IgG	Full Name: RAP2B, member of RAS oncogene family	
Immunogen Catalog Number: AG9331	Calculated MW: 183 aa, 21 kDa	
	Observed MW: 19-22 kDa	

Applications

Tested Applications: WB, ELISA	Positive Controls: WB: mouse brain tissue, MCF-7 cells, rat brain tissue, HEK-293 cells
Cited Applications: WB	
Species Specificity: human, mouse, rat	
Cited Species: mouse	

Background Information

RAP2B belongs to a family of RAS-related genes. It share approximately 50% amino acid identity with the classical RAS proteins and have numerous structural features in common. Rap2B is a platelet protein that is activated by thrombin and involved in platelet activation. RAP2B may be a novel candidate oncogene that plays important roles in carcinogenesis through activation of NF-kappaB pathway.

Notable Publications

Author	Pubmed ID	Journal	Application
Li Yi Y	22081607	J Biol Chem	WB

Storage

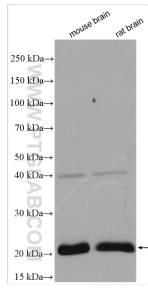
Storage:
Store at -20°C. Stable for one year after shipment.
Storage Buffer:
PBS with 0.02% sodium azide and 50% glycerol pH 7.3.
Aliquoting is unnecessary for -20°C storage

*** 20ul sizes contain 0.1% BSA

For technical support and original validation data for this product please contact:
T: 1 (888) 4PTGLAB (1-888-478-4522) (toll free in USA), or 1(312) 455-8498 (outside USA)
E: proteintech@ptglab.com
W: ptglab.com

This product is exclusively available under Proteintech Group brand and is not available to purchase from any other manufacturer.

Selected Validation Data



Various lysates were subjected to SDS PAGE followed by western blot with 16266-1-AP (RAP2B antibody) at dilution of 1:4000 incubated at room temperature for 1.5 hours.