

For Research Use Only

# CEP63 Polyclonal antibody

Catalog Number: 16268-1-AP

Featured Product

19 Publications



## Basic Information

### Catalog Number:

16268-1-AP

### Size:

150ul, Concentration: 1000 ug/ml by Nanodrop and 593 ug/ml by Bradford method using BSA as the standard;

### Source:

Rabbit

### Isotype:

IgG

### Immunogen Catalog Number:

AG9335

### GenBank Accession Number:

BC014050

### GeneID (NCBI):

80254

### UNIPROT ID:

Q96MT8

### Full Name:

centrosomal protein 63kDa

### Calculated MW:

703 aa, 81 kDa

### Observed MW:

57-75 kDa

### Purification Method:

Antigen affinity purification

### Recommended Dilutions:

WB: 1:500-1:2000

IP: 0.5-4.0 ug for 1.0-3.0 mg of total protein lysate

IF/ICC: 1:200-1:800

## Applications

### Tested Applications:

WB, IF/ICC, IP, ELISA

### Cited Applications:

WB, IF, IP

### Species Specificity:

human, mouse, rat, canine

### Cited Species:

human, mouse

### Positive Controls:

WB: HEK-293 cells, mouse liver tissue, HeLa cells, mouse thymus tissue

IP: HEK-293 cells,

IF/ICC: MDCK cells,

## Background Information

CEP63 is a 63 kDa centrosomal protein. It is required for normal spindle assembly. It maintains centrosome numbers through centrosomal recruitment of CEP152. CEP63 recruits CDK1 to centrosomes. It plays a role in DNA damage response. This antibody can recognize all the four isoforms of CEP63 (56 kDa, 58 kDa, 63 kDa and 81 kDa).

## Notable Publications

Author	Pubmed ID	Journal	Application
Søs Grønbaek Holdgaard	31519908	Nat Commun	IF
Divya Jayaraman	27974163	Neuron	WB,IF
Zhenguang Ying	36280838	BMC Biol	WB,IF

## Storage

### Storage:

Store at -20°C. Stable for one year after shipment.

### Storage Buffer:

PBS with 0.02% sodium azide and 50% glycerol, pH7.3

Aliquoting is unnecessary for -20°C storage

\*\*\* 20ul sizes contain 0.1% BSA

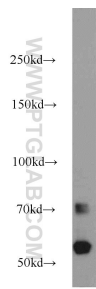
For technical support and original validation data for this product please contact:

T: 1 (888) 4PTGLAB (1-888-478-4522) (toll free in USA), or 1(312) 455-8498 (outside USA)

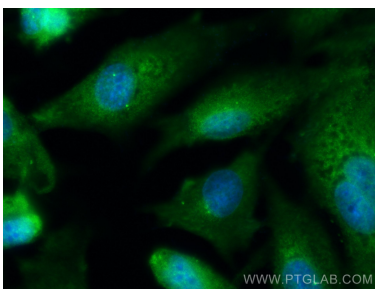
E: [proteintech@ptglab.com](mailto:proteintech@ptglab.com)  
W: [ptglab.com](http://ptglab.com)

This product is exclusively available under Proteintech Group brand and is not available to purchase from any other manufacturer.

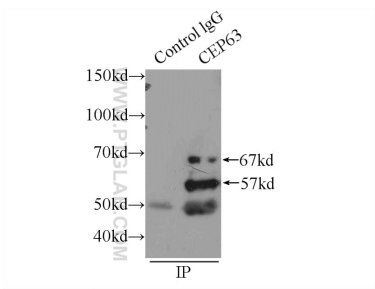
Selected Validation Data



HEK-293 cells were subjected to SDS PAGE followed by western blot with 16268-1-AP (CEP63 antibody) at dilution of 1:1000 incubated at room temperature for 1.5 hours.



Immunofluorescent analysis of (-20°C Methanol) fixed MDCK cells using CEP63 antibody (16268-1-AP) at dilution of 1:400 and CoraLite®488-Conjugated Goat Anti-Rabbit IgG(H+L).



IP result of anti-CEP63 (IP:16268-1-AP, 3ug; Detection:16268-1-AP 1:500) with HEK-293 cells lysate 1700ug.