

For Research Use Only

CHAC2 Polyclonal antibody

Catalog Number: 16304-1-AP

Featured Product

6 Publications



Basic Information

Catalog Number:

16304-1-AP

Size:

150ul, Concentration: 500 ug/ml by Nanodrop and 300 ug/ml by Bradford method using BSA as the standard;

Source:

Rabbit

Isotype:

IgG

Immunogen Catalog Number:

AG9281

GenBank Accession Number:

BC019239

GeneID (NCBI):

494143

UNIPROT ID:

Q8WUX2

Full Name:

ChaC, cation transport regulator homolog 2 (E. coli)

Calculated MW:

184 aa, 21 kDa

Observed MW:

21 kDa

Purification Method:

Antigen affinity purification

Recommended Dilutions:

WB: 1:1000-1:3000

IF/ICC: 1:200-1:800

Applications

Tested Applications:

WB, IF/ICC, ELISA

Cited Applications:

WB, IHC, IF

Species Specificity:

human, mouse, rat

Cited Species:

human, mouse, rat, pig

Positive Controls:

WB: Jurkat cells, Raji cells

IF/ICC: MCF-7 cells,

Background Information

CHAC2 is a gamma-glutamyl cyclotransferase that catalyzes the conversion of glutathione to 5-oxoproline and cysteinylglycine. CHAC2 is involved in continuous, basal turnover of cytosolic glutathione (PMID: 27913623).

Notable Publications

Author	Pubmed ID	Journal	Application
Xiaohan Zhai	35179299	Environ Toxicol	WB
Chih-Chao Yang	39990671	Int J Biol Sci	WB, IHC, IF
Chih-Chao Yang	39190032	J Mol Histol	IHC, IF

Storage

Storage:

Store at -20°C. Stable for one year after shipment.

Storage Buffer:

PBS with 0.02% sodium azide and 50% glycerol, pH7.3

Aliquoting is unnecessary for -20°C storage

*** 20ul sizes contain 0.1% BSA

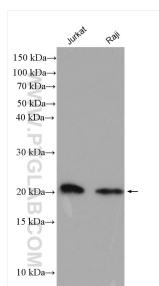
For technical support and original validation data for this product please contact:

T: 1 (888) 4PTGLAB (1-888-478-4522) (toll free in USA), or 1(312) 455-8498 (outside USA)

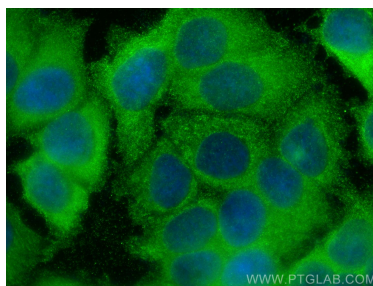
E: proteintech@ptglab.com
W: ptglab.com

This product is exclusively available under Proteintech Group brand and is not available to purchase from any other manufacturer.

Selected Validation Data



Jurkat cells were subjected to SDS PAGE followed by western blot with 16304-1-AP (CHAC2 antibody) at dilution of 1:2000 incubated at room temperature for 1.5 hours.



Immunofluorescent analysis of (-20°C Methanol) fixed MCF-7 cells using CHAC2 antibody (16304-1-AP) at dilution of 1:400 and CoraLite® 488-Conjugated AffiniPure Goat Anti-Rabbit IgG(H+L) (SA00013-2).