

For Research Use Only

BTD Polyclonal ANTIBODY

Catalog Number: 16330-1-AP



Basic Information

Catalog Number:

16330-1-AP

Size:

150UL, Concentration: 133 µg/ml by Bradford method using BSA as the standard;

Source:

Rabbit

Isotype:

IgG

Immunogen Catalog Number:

AG9449

GenBank Accession Number:

BC012099

GeneID (NCBI):

686

Full Name:

biotinidase

Calculated MW:

543 aa, 61 kDa

Observed MW:

48 kDa

Purification Method:

Antigen affinity purification

Recommended Dilutions:

WB 1:500-1:2000

IHC 1:20-1:200

IF 1:20-1:200

Applications

Tested Applications:

IF, IHC, WB, ELISA

Species Specificity:

human, mouse, rat

Note-IHC: suggested antigen retrieval with TE buffer pH 9.0; (*) Alternatively, antigen retrieval may be performed with citrate buffer pH 6.0

Positive Controls:

WB: HeLa cells, human brain tissue

IHC: human placenta tissue,

IF: HeLa cells,

Background Information

Storage

Storage:

Store at -20°C. Stable for one year after shipment.

Storage Buffer:

PBS with 0.02% sodium azide and 50% glycerol pH 7.3.

Aliquoting is unnecessary for -20°C storage

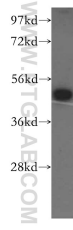
For technical support and original validation data for this product please contact:

T: 1 (888) 4PTGLAB (1-888-478-4522) (toll free in USA), or 1(312) 455-8498 (outside USA)

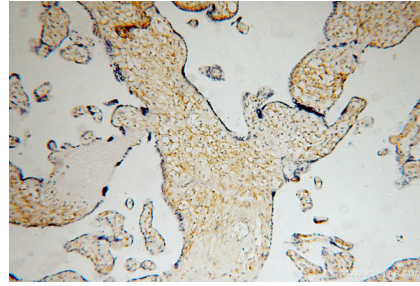
E: proteintech@ptglab.com
W: ptglab.com

This product is exclusively available under Proteintech Group brand and is not available to purchase from any other manufacturer.

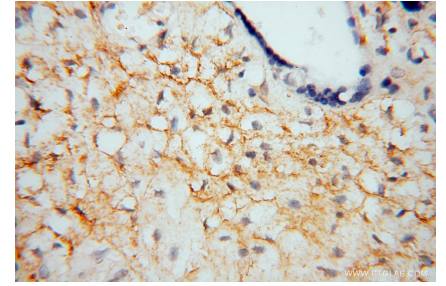
Selected Validation Data



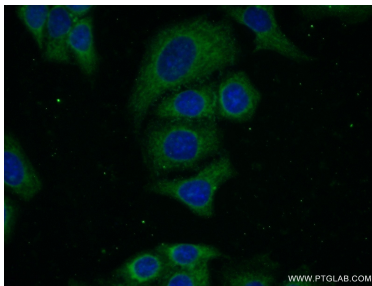
HeLa cells were subjected to SDS PAGE followed by western blot with 16330-1-AP (BTD antibody) at dilution of 1:500 incubated at room temperature for 1.5 hours.



Immunohistochemical analysis of paraffin-embedded human placenta using 16330-1-AP (BTD antibody) at dilution of 1:50 (under 10x lens).



Immunohistochemical analysis of paraffin-embedded human placenta using 16330-1-AP (BTD antibody) at dilution of 1:50 (under 40x lens).



Immunofluorescent analysis of (-20 Ethanol) fixed HeLa cells using 16330-1-AP (BTD antibody) at dilution of 1:50 and Alexa Fluor 488-conjugated AffiniPure Goat Anti-Rabbit IgG(H+L).