

For Research Use Only

# ABP1 Polyclonal ANTIBODY

Catalog Number: 16338-1-AP



## Basic Information

Catalog Number:  
16338-1-AP

Size:  
37 µg/150 µl

Source:  
Rabbit

Isotype:  
IgG

Purification Method:  
Antigen affinity purification

Immunogen Catalog Number:  
AC9492

GenBank Accession Number:  
BC014093

GeneID (NCBI):  
26

Full Name:  
amiloride binding protein 1 (amine oxidase  
(copper-containing))

Calculated MW:  
751aa, 85 kDa

Observed MW:  
85 kDa

Recommended Dilutions:  
IHC 1:50-1:500

## Applications

Tested Applications:

IHC, ELISA

Species Specificity:

human,mouse,rat

**Note: suggested antigen retrieval with TE  
buffer pH 9.0; (\*) Alternatively, antigen  
retrieval may be performed with citrate  
buffer pH 6.0**

Positive Controls:

IHC : human kidney tissue; human placenta tissue

## Background Information

### Notable Publications

Author	Pubmed ID	Journal	Application
--------	-----------	---------	-------------

## Storage

Storage:

Store at -20°C. Stable for one year after shipment.

Storage Buffer:

PBS with 0.1% sodium azide and 50% glycerol pH 7.3.

Aliquoting is unnecessary for -20°C storage

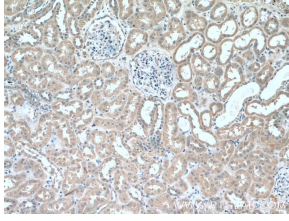
For technical support and original validation data for this  
product please contact:

T: 1 (888) 4PTGLAB (1-888-478-4522) (toll  
free in USA), or 1(312) 455-8498 (outside  
USA)

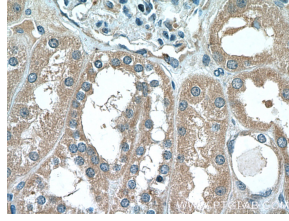
E: [proteintech@ptglab.com](mailto:proteintech@ptglab.com)  
W: [ptglab.com](http://ptglab.com)

This product is exclusively available under  
Proteintech Group brand and is not available to  
purchase from any other manufacturer.

## Selected Validation Data



Immunohistochemical analysis of paraffin-embedded human kidney tissue slide using 16338-1-AP( ABP1 Antibody) at dilution of 1:200 (under 10x lens).



Immunohistochemical analysis of paraffin-embedded human kidney tissue slide using 16338-1-AP( ABP1 Antibody) at dilution of 1:200 (under 40x lens).