

For Research Use Only

# BCAT2 Polyclonal ANTIBODY



Catalog Number: 16417-1-AP

Featured Product

2 Publications

## Basic Information

Catalog Number:  
16417-1-AP

Size:  
40 µg/150 µl

Source:  
Rabbit

Isotype:  
IgG

Purification Method:  
Antigen affinity purification

Immunogen Catalog Number:  
AC9573

GenBank Accession Number:  
BC001900

GeneID (NCBI):  
587

Full Name:  
branched chain aminotransferase 2,  
mitochondrial

Calculated MW:  
44 kDa

Observed MW:  
38-42 kDa

Recommended Dilutions:

WB 1:500-1:2000

IHC 1:20-1:200

IF 1:50-1:500

## Applications

Tested Applications:

IF, IHC, WB, ELISA

Cited Applications:

WB

Species Specificity:

Human

Cited Species:

human, mouse

**Note-IHC: suggested antigen retrieval with  
TE buffer pH 9.0; (\*) Alternatively, antigen  
retrieval may be performed with citrate  
buffer pH 6.0**

Positive Controls:

WB : HepG2 cells; L02 cells, MCF-7 cells

IHC : human skin tissue; human placenta tissue

IF : C2C12 cells;

## Background Information

### Notable Publications

Author	Pubmed ID	Journal	Application
Dan Shao	30050148	Nat Commun	WB
Shuqian Liu	24454921	PLoS One	WB

## Storage

Storage:

Store at -20°C. Stable for one year after shipment.

Storage Buffer:

PBS with 0.1% sodium azide and 50% glycerol pH 7.3.

Aliquoting is unnecessary for -20°C storage

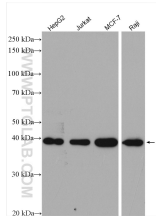
For technical support and original validation data for this  
product please contact:

T: 1 (888) 4PTGLAB (1-888-478-4522) (toll  
free in USA), or 1(312) 455-8498 (outside  
USA)

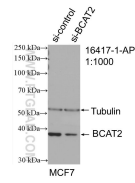
E: [proteintech@ptglab.com](mailto:proteintech@ptglab.com)  
W: [ptglab.com](http://ptglab.com)

This product is exclusively available under  
Proteintech Group brand and is not available to  
purchase from any other manufacturer.

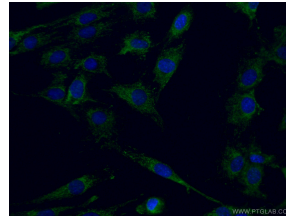
**Selected Validation Data**



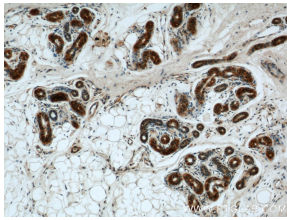
Various lysates were subjected to SDS PAGE followed by western blot with 16417-1-AP (BCAT2 antibody) at dilution of 1:1000 incubated at room temperature for 1.5 hours



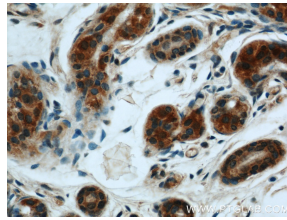
WB result of BCAT2 antibody (16417-1-AP; 1:1000; incubated at room temperature for 1.5 hours) with sh-Control and sh-BCAT2 transfected MCF-7 cells



Immunofluorescent analysis of (4% PFA) fixed C2C12 cells using 16417-1-AP (BCAT2 antibody) at dilution of 1:50 and CoralLite488-Conjugated AffiniPure Goat Anti-Rabbit IgG(H+L)



Immunohistochemical analysis of paraffin-embedded human skin using 16417-1-AP(BCAT2 antibody) at dilution of 1:50 (under 10x lens)



Immunohistochemical analysis of paraffin-embedded human skin using 16417-1-AP(BCAT2 antibody) at dilution of 1:50 (under 40x lens)