

For Research Use Only

PAN2 Polyclonal ANTIBODY



Catalog Number: 16427-1-AP

Featured Product

5 Publications

Basic Information

Catalog Number:

16427-1-AP

Size:

150UL, Concentration: 140 µg/ml by Bradford method using BSA as the standard;

Source:

Rabbit

Isotype:

IgG

Immunogen Catalog Number:

AG9670

GenBank Accession Number:

BC024043

GeneID (NCBI):

9924

Full Name:

PAN2 poly(A) specific ribonuclease subunit homolog (*S. cerevisiae*)

Calculated MW:

1198 aa, 135 kDa

Observed MW:

127 kDa

Purification Method:

Antigen affinity purification

Recommended Dilutions:

WB 1:500-1:1000

IHC 1:20-1:200

IF 1:50-1:500

Applications

Tested Applications:

IF, IHC, WB, ELISA

Cited Applications:

IF, IHC, IP, WB

Species Specificity:

human, mouse, rat

Cited Species:

human, mouse

Note-IHC: suggested antigen retrieval with TE buffer pH 9.0; (*) Alternatively, antigen retrieval may be performed with citrate buffer pH 6.0

Positive Controls:

WB: NIH/3T3 cells, HepG2 cells

IHC: human heart tissue, human brain tissue, human kidney tissue, human liver tissue, human placenta tissue, human spleen tissue, human testis tissue

IF: NIH/3T3 cells,

Background Information

Notable Publications

Author	Pubmed ID	Journal	Application
Shangda Yang	29599486	Nat Commun	WB,IHC,IF
Stefanie Jonas	24880343	Nat Struct Mol Biol	WB
Jun Ma	26134871	Biol Reprod	WB

Storage

Storage:

Store at -20°C. Stable for one year after shipment.

Storage Buffer:

PBS with 0.02% sodium azide and 50% glycerol pH 7.3.

Aliquoting is unnecessary for -20°C storage

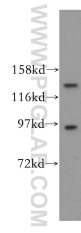
For technical support and original validation data for this product please contact:

T: 1 (888) 4PTGLAB (1-888-478-4522) (toll free in USA), or 1(312) 455-8498 (outside USA)

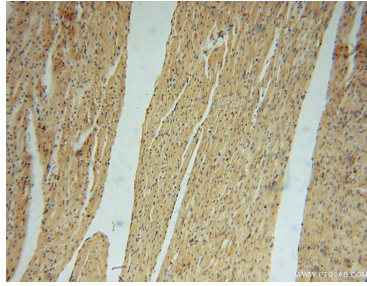
E: proteintech@ptglab.com
W: ptglab.com

This product is exclusively available under Proteintech Group brand and is not available to purchase from any other manufacturer.

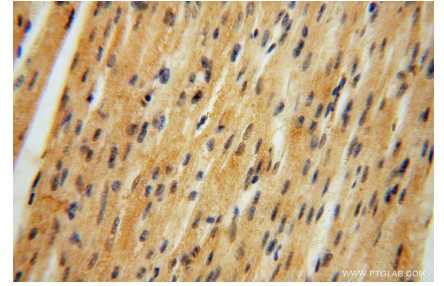
Selected Validation Data



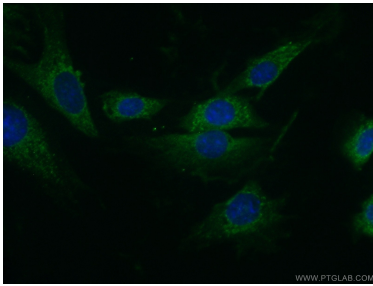
NIH/3T3 cells were subjected to SDS PAGE followed by western blot with 16427-1-AP (PAN2 antibody) at dilution of 1:300 incubated at room temperature for 1.5 hours.



Immunohistochemical analysis of paraffin-embedded human heart using 16427-1-AP (PAN2 antibody) at dilution of 1:50 (under 10x lens).



Immunohistochemical analysis of paraffin-embedded human heart using 16427-1-AP (PAN2 antibody) at dilution of 1:50 (under 40x lens).



Immunofluorescent analysis of (10% Formaldehyde) fixed NIH/3T3 cells using 16427-1-AP (PAN2 antibody) at dilution of 1:50 and Alexa Fluor 488-conjugated AffiniPure Goat Anti-Rabbit IgG(H+L).