

For Research Use Only

NIT2 Polyclonal ANTIBODY



Catalog Number: 16438-1-AP

1 Publications

Basic Information

Catalog Number:
16438-1-AP

Size:
45 µg/150 µl

Source:
Rabbit

Isotype:
IgG

Purification Method:
Antigen affinity purification

Immunogen Catalog Number:
AC9756

GenBank Accession Number:
BC020620

GeneID (NCBI):
56954

Full Name:
nitrilase family, member 2

Calculated MW:
276aa, 31 kDa

Observed MW:
31 kDa

Recommended Dilutions:
WB 1:500-1:3000

Applications

Tested Applications:
WB, ELISA

Cited Applications:
WB

Species Specificity:
human,mouse,rat

Cited Species:
mouse

Note: suggested antigen retrieval with *TE* buffer pH 9.0; (*) Alternatively, antigen retrieval may be performed with *citrate* buffer pH 6.0

Positive Controls:

WB : mouse liver tissue; human kidney tissue, human brain tissue, human heart tissue, mouse kidney tissue, rat liver tissue

Background Information

Notable Publications

Author	Pubmed ID	Journal	Application
Gunars Osis	27117802	Physiol Rep	WB

Storage

Storage:
Store at -20°C. Stable for one year after shipment.
Storage Buffer:
PBS with 0.02% sodium azide and 50% glycerol pH 7.3.
Aliquoting is unnecessary for -20°C storage

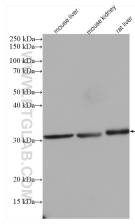
For technical support and original validation data for this product please contact:

T: 1 (888) 4PTGLAB (1-888-478-4522) (toll free in USA), or 1(312) 455-8498 (outside USA)

E: proteintech@ptglab.com
W: ptglab.com

This product is exclusively available under Proteintech Group brand and is not available to purchase from any other manufacturer.

Selected Validation Data



Various lysates were subjected to SDS PAGE followed by western blot with 16438-1-AP (NIT2 antibody) at dilution of 1:1500 incubated at room temperature for 1.5 hours