

# ERK1/2 Polyclonal antibody

Catalog Number: 16443-1-AP

382 Publications

## Basic Information

<b>Catalog Number:</b> 16443-1-AP	<b>GenBank Accession Number:</b> BC017832	<b>Purification Method:</b> Antigen affinity purification
<b>Size:</b> 150ul , Concentration: 400 µg/ml by Nanodrop;	<b>GeneID (NCBI):</b> 5594	<b>Recommended Dilutions:</b> WB 1:1000-1:4000 IHC 1:50-1:500 IF 1:10-1:100
<b>Source:</b> Rabbit	<b>Full Name:</b> mitogen-activated protein kinase 1	
<b>Isotype:</b> IgG	<b>Calculated MW:</b> 360 aa, 41 kDa	
<b>Immunogen Catalog Number:</b> AG9772	<b>Observed MW:</b> 38-44 kDa	

## Applications

<b>Tested Applications:</b> IF, IHC, WB, ELISA	<b>Positive Controls:</b>
<b>Cited Applications:</b> IF, IHC, IP, WB	<b>WB:</b> NIH/3T3 cells, A431 cells, mouse kidney tissue, HEK-293 cells, HeLa cells, PC-3 cells, rat kidney tissue, mouse brain tissue, rat brain tissue
<b>Species Specificity:</b> human, mouse, rat	<b>IHC:</b> human liver tissue, human kidney tissue
<b>Cited Species:</b> human, chicken, rat, sheep, mouse, pig, Eriocheir sinensis	<b>IF:</b> HeLa cells,
<b>Note-IHC: suggested antigen retrieval with TE buffer pH 9.0; (*) Alternatively, antigen retrieval may be performed with citrate buffer pH 6.0</b>	

## Background Information

ERK1 and ERK2 belongs to the protein kinase superfamily. It is involved in both the initiation and regulation of meiosis, mitosis, and postmitotic functions in differentiated cells by phosphorylating a number of transcription factors such as ELK-1. ERK1/2 catalyzed the reaction: ATP + a protein = ADP + a phosphoprotein. It is activated by tyrosine phosphorylation in response to INS and NGF. This antibody can recognize both ERK1 and ERK2 with the molecular mass of 38-44 kDa.

## Notable Publications

Author	Pubmed ID	Journal	Application
Xin-Sen Chen	36182039	Pharmacol Res	WB
YanHua Fan	36174847	Fitoterapia	WB
Weihua Xu	31702033	Mol Med Rep	WB

## Storage

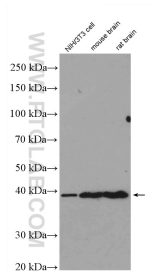
**Storage:**  
Store at -20°C. Stable for one year after shipment.  
**Storage Buffer:**  
PBS with 0.02% sodium azide and 50% glycerol pH 7.3.  
**Aliquoting is unnecessary for -20°C storage**

\*\*\* 20ul sizes contain 0.1% BSA

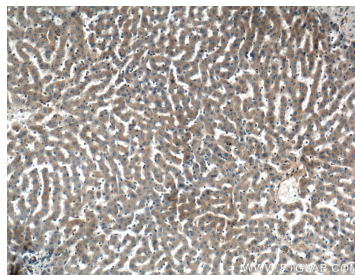
For technical support and original validation data for this product please contact:  
T: 1 (888) 4PTGLAB (1-888-478-4522) (toll free in USA), or 1(312) 455-8498 (outside USA)  
E: [proteintech@ptglab.com](mailto:proteintech@ptglab.com)  
W: [ptglab.com](http://ptglab.com)

This product is exclusively available under Proteintech Group brand and is not available to purchase from any other manufacturer.

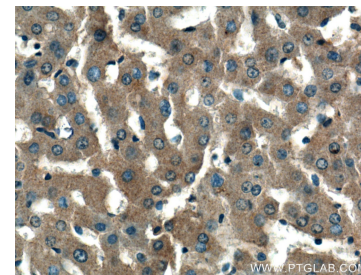
## Selected Validation Data



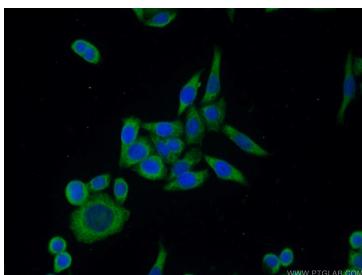
Various lysates were subjected to SDS PAGE followed by western blot with 16443-1-AP (ERK1/2 antibody) at dilution of 1:2000 incubated at room temperature for 1.5 hours.



Immunohistochemical analysis of paraffin-embedded human liver tissue slide using 16443-1-AP (ERK1/2 Antibody) at dilution of 1:200 (under 10x lens).



Immunohistochemical analysis of paraffin-embedded human liver tissue slide using 16443-1-AP (ERK1/2 Antibody) at dilution of 1:200 (under 40x lens).



Immunofluorescent analysis of HeLa cells using 16443-1-AP (ERK1/2 antibody) at dilution of 1:25 and Alexa Fluor 488-conjugated AffiniPure Goat Anti-Rabbit IgG(H+L).