

For Research Use Only

Caveolin-1 Polyclonal antibody

Catalog Number: 16447-1-AP

Featured Product

105 Publications



Basic Information

Catalog Number:

16447-1-AP

Size:

150ul, Concentration: 550 ug/ml by Nanodrop;

Source:

Rabbit

Isotype:

IgG

Immunogen Catalog Number:

AG8049

GenBank Accession Number:

BC006432

GeneID (NCBI):

857

UNIPROT ID:

Q03135

Full Name:

caveolin 1, caveolae protein, 22kDa

Calculated MW:

22 kDa

Observed MW:

20-25 kDa

Purification Method:

Antigen affinity purification

Recommended Dilutions:

WB: 1:1000-1:8000

IP: 0.5-4.0 ug for 1.0-3.0 mg of total protein lysate

IHC: 1:50-1:500

Applications

Tested Applications:

WB, IHC, IP, ELISA

Cited Applications:

WB, IHC, IF, IP, CoIP

Species Specificity:

human, mouse, rat

Cited Species:

human, mouse, rat, canine, monkey, zebrafish, bovine

Note-IHC: suggested antigen retrieval with TE buffer pH 9.0; (*) Alternatively, antigen retrieval may be performed with citrate buffer pH 6.0

Positive Controls:

WB: A549 cells, HeLa cells, NIH/3T3 cells

IP: A549 cells,

IHC: human breast cancer tissue, human lung tissue, human heart tissue, human liver tissue, human lung cancer tissue, mouse brain tissue, mouse kidney tissue

Background Information

Caveolin-1 (CAV1), a multifunctional protein, is the main constituent molecule of caveolae and represents a scaffolding molecule for several signaling molecules including epidermal growth factor receptor (PMID: 19641024). Several studies have implicated that a reduced expression of CAV1 was found in cancers including head and neck carcinoma (PMID: 19002186). However, other studies recognize CAV1 as a tumor promoter because CAV1 is overexpressed in various kinds of cancers, especially in oral cancer (PMID: 20558341). Recent study also show that CAV1 is involved in astric Cancer (PMID: 25339030). MW of Caveolin-1 is from 20-25 kDa due to phosphorylation (PMID: 10198051).

Notable Publications

Author	Pubmed ID	Journal	Application
Li Wu	36184060	Vascul Pharmacol	WB,IF
Dali Zhao	34555268	FEBS Open Bio	WB
Denghui Wei	32958903	Cell Res	WB

Storage

Storage:

Store at -20°C. Stable for one year after shipment.

Storage Buffer:

PBS with 0.02% sodium azide and 50% glycerol, pH7.3

Aliquoting is unnecessary for -20°C storage

*** 20ul sizes contain 0.1% BSA

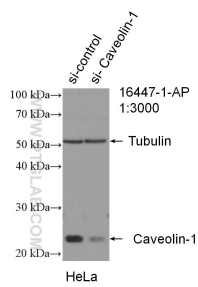
For technical support and original validation data for this product please contact:

T: 1 (888) 4PTGLAB (1-888-478-4522) (toll free in USA), or 1(312) 455-8498 (outside USA)

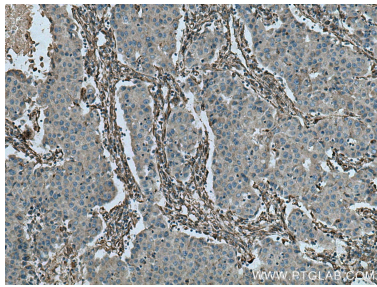
E: proteintech@ptglab.com
W: ptglab.com

This product is exclusively available under Proteintech Group brand and is not available to purchase from any other manufacturer.

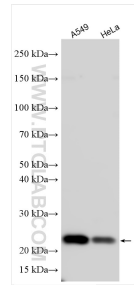
Selected Validation Data



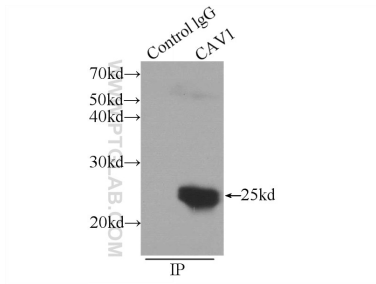
WB result of Caveolin-1 antibody (16447-1-AP; 1:3000; incubated at room temperature for 1.5 hours) with sh-Control and sh-Caveolin-1 transfected HeLa cells.



Immunohistochemical analysis of paraffin-embedded human breast cancer tissue slide using 16447-1-AP (Caveolin-1 antibody) at dilution of 1:200 (under 10x lens). Heat mediated antigen retrieval with Tris-EDTA buffer (pH 9.0).



Various lysates were subjected to SDS PAGE followed by western blot with 16447-1-AP (Caveolin-1 antibody) at dilution of 1:4000 incubated at room temperature for 1.5 hours.



IP result of anti-Caveolin-1 (IP:16447-1-AP, 3ug; Detection:16447-1-AP 1:500) with A549 cells lysate 1200ug.