

For Research Use Only

Claudin 3 Polyclonal antibody

Catalog Number: 16456-1-AP

11 Publications



Basic Information

Catalog Number:

16456-1-AP

Size:

150ul, Concentration: 600 µg/ml by Nanodrop and 300 µg/ml by Bradford method using BSA as the standard;

Source:

Rabbit

Isotype:

IgG

Immunogen Catalog Number:

AG9411

GenBank Accession Number:

BC016056

GeneID (NCBI):

1365

Full Name:

claudin 3

Calculated MW:

220 aa, 23 kDa

Observed MW:

20-24 kDa

Purification Method:

Antigen affinity purification

Recommended Dilutions:

IP 0.5-4.0 ug for IP and 1:200-1:1000 for WB
IHC 1:50-1:500

Applications

Tested Applications:

IHC, IP, ELISA

Cited Applications:

IF, IHC

Species Specificity:

human, mouse, rat

Cited Species:

human, mouse, pig, rat

Note-IHC: suggested antigen retrieval with TE buffer pH 9.0; (*) Alternatively, antigen retrieval may be performed with citrate buffer pH 6.0

Positive Controls:

IP: mouse large intestine tissue,

IHC: human breast cancer tissue, mouse colon tissue

Background Information

Claudins are a family of proteins that are the most important components of the tight junctions, where they establish the paracellular barrier that controls the flow of molecules in the intercellular space between the cells of an epithelium. 23 claudins have been identified. They are small (20-27 kilodalton (kDa)) proteins with very similar structure. They have four transmembrane domains, with the N-terminus and the C-terminus in the cytoplasm.

Notable Publications

Author	Pubmed ID	Journal	Application
Jie Cai	31520958	Environ Int	IHC
Xue Li	31734580	Biomed Pharmacother	WB
Junrong Wu	32937690	J Hazard Mater	WB, IHC

Storage

Storage:

Store at -20°C. Stable for one year after shipment.

Storage Buffer:

PBS with 0.02% sodium azide and 50% glycerol pH 7.3.

Aliquoting is unnecessary for -20°C storage

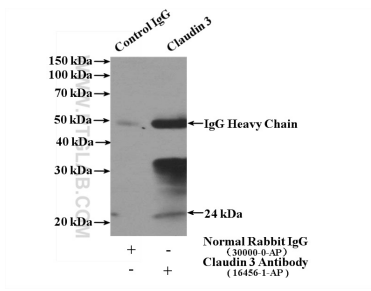
For technical support and original validation data for this product please contact:

T: 1 (888) 4PTGLAB (1-888-478-4522) (toll free in USA), or 1(312) 455-8498 (outside USA)

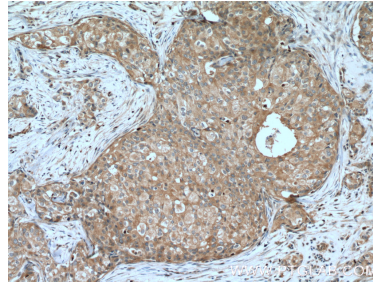
E: proteintech@ptglab.com
W: ptglab.com

This product is exclusively available under Proteintech Group brand and is not available to purchase from any other manufacturer.

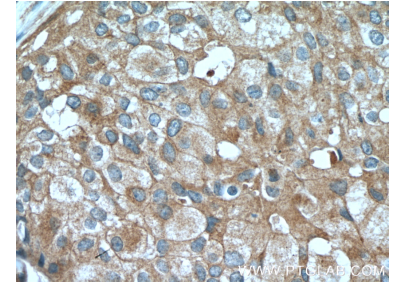
Selected Validation Data



IP Result of anti-Claudin 3 (IP:16456-1-AP, 4ug; Detection:16456-1-AP 1:300) with mouse large intestine tissue lysate 3200ug.



Immunohistochemical analysis of paraffin-embedded human breast cancer tissue slide using 16456-1-AP (Claudin 3 Antibody) at dilution of 1:200 (under 10x lens). Heat mediated antigen retrieval with Tris-EDTA buffer (pH 9.0).



Immunohistochemical analysis of paraffin-embedded human breast cancer tissue slide using 16456-1-AP (Claudin 3 Antibody) at dilution of 1:200 (under 40x lens). Heat mediated antigen retrieval with Tris-EDTA buffer (pH 9.0).