

For Research Use Only

GTF2B Polyclonal ANTIBODY



Catalog Number: 16467-1-AP **2 Publications**

Basic Information

Catalog Number:

16467-1-AP

Size:

150UL, Concentration: 400 µg/ml by Bradford method using BSA as the standard;

Source:

Rabbit

Isotype:

IgG

Immunogen Catalog Number:

AG9547

GenBank Accession Number:

BC020597

GeneID (NCBI):

2959

Full Name:

general transcription factor IIB

Calculated MW:

316 aa, 35 kDa

Observed MW:

30-35 kDa

Purification Method:

Antigen affinity purification

Recommended Dilutions:

WB 1:500-1:2000

IP 0.5-4.0 µg for IP and 1:200-1:1000 for WB

Applications

Tested Applications:

IP, WB, ELISA

Cited Applications:

WB

Species Specificity:

human

Cited Species:

human

Positive Controls:

WB : K-562 cells, HepG2 cells, HeLa cells, MCF-7 cells

IP : K-562 cells,

Background Information

Notable Publications

Author	Pubmed ID	Journal	Application
Jiaojiao Hao	28123844	Am J Cancer Res	
Jiaojiao Hao	30717768	J Exp Clin Cancer Res	WB

Storage

Storage:

Store at -20°C. Stable for one year after shipment.

Storage Buffer:

PBS with 0.1% sodium azide and 50% glycerol pH 7.3.

Aliquoting is unnecessary for -20°C storage

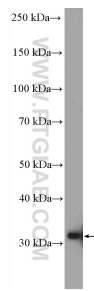
For technical support and original validation data for this product please contact:

T: 1 (888) 4PTGLAB (1-888-478-4522) (toll free in USA), or 1(312) 455-8498 (outside USA)

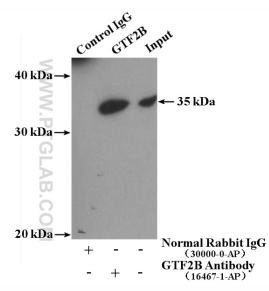
E: proteintech@ptglab.com
W: ptglab.com

This product is exclusively available under Proteintech Group brand and is not available to purchase from any other manufacturer.

Selected Validation Data



K-562 cells were subjected to SDS PAGE followed by western blot with 16467-1-AP (GTF2B antibody) at dilution of 1:1000 incubated at room temperature for 1.5 hours.



IP Result of anti-GTF2B (IP:16467-1-AP, 4ug; Detection:16467-1-AP 1:300) with K-562 cells lysate 3200ug.