

For Research Use Only

# Albumin Polyclonal antibody

Catalog Number: 16475-1-AP

Featured Product

177 Publications



## Basic Information

### Catalog Number:

16475-1-AP

### Size:

150ul, Concentration: 750 ug/ml by Nanodrop;

### Source:

Rabbit

### Isotype:

IgG

### Immunogen Catalog Number:

AG9569

### GenBank Accession Number:

BC034023

### GeneID (NCBI):

213

### UNIPROT ID:

P02768

### Full Name:

albumin

### Calculated MW:

609 aa, 69 kDa

### Observed MW:

66 kDa

### Purification Method:

Antigen affinity purification

### Recommended Dilutions:

WB: 1:5000-1:50000

IP: 0.5-4.0 ug for 1.0-3.0 mg of total protein lysate

IHC: 1:200-1:2000

IF-P: 1:50-1:500

IF/ICC: 1:200-1:800

## Applications

### Tested Applications:

WB, IHC, IF/ICC, IF-P, IP, ELISA

### Cited Applications:

WB, IHC, IF, CoIP, ELISA

### Species Specificity:

human, mouse, rat

### Cited Species:

human, mouse, rat, goat

**Note-IHC: suggested antigen retrieval with TE buffer pH 9.0; (\*) Alternatively, antigen retrieval may be performed with citrate buffer pH 6.0**

### Positive Controls:

**WB**: human blood tissue, human plasma, mouse serum, HepG2 cells, mouse liver tissue, rat liver tissue

**IP**: human plasma tissue,

**IHC**: human liver tissue, mouse liver tissue, human normal colon

**IF-P**: mouse liver tissue,

**IF/ICC**: LO2 cells,

## Background Information

Albumin is the most abundant protein in blood plasma. Alterations of level of serum albumin are linked to variety of diseases. Albumin is expressed exclusively by well-differentiated hepatocytes, thus anti-albumin has been used to mark hepatocytes. In addition, glycated serum albumin is also a potential diabetes biomarker. The N-terminal 24aa of albumin will be cleaved to generate the mature form of serum albumin with MW 66 kDa. (21388516, 23832071)

## Notable Publications

Author	Pubmed ID	Journal	Application
Yue Gao	34630378	Front Immunol	ELISA
Folnetti A Alvarez	36114323	Breast Cancer Res Treat	WB
Hideaki Morishita	31526472	Elife	WB

## Storage

### Storage:

Store at -20°C. Stable for one year after shipment.

### Storage Buffer:

PBS with 0.02% sodium azide and 50% glycerol, pH7.3

Aliquoting is unnecessary for -20°C storage

\*\*\* 20ul sizes contain 0.1% BSA

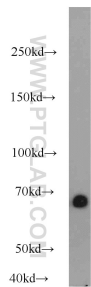
For technical support and original validation data for this product please contact:

T: 1 (888) 4PTGLAB (1-888-478-4522) (toll free in USA), or 1(312) 455-8498 (outside USA)

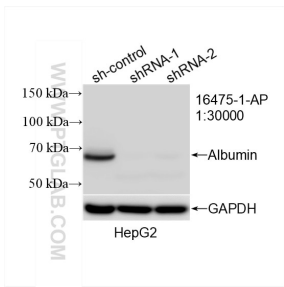
E: [proteintech@ptglab.com](mailto:proteintech@ptglab.com)  
W: [ptglab.com](http://ptglab.com)

This product is exclusively available under Proteintech Group brand and is not available to purchase from any other manufacturer.

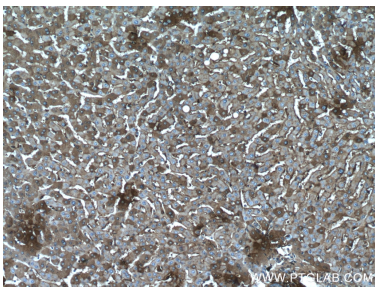
Selected Validation Data



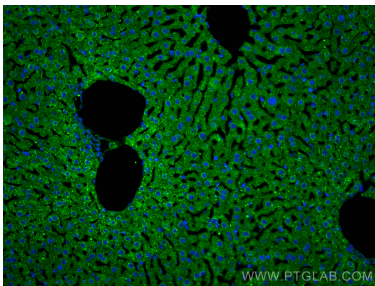
human blood were subjected to SDS PAGE followed by western blot with 16475-1-AP (ALB antibody) at dilution of 1:10000 incubated at room temperature for 1.5 hours.



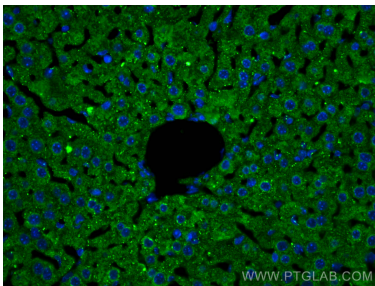
WB result of Albumin antibody (16475-1-AP; 1:30000; incubated at room temperature for 1.5 hours) with sh-Control and sh-Albumin transfected HepG2 cells.



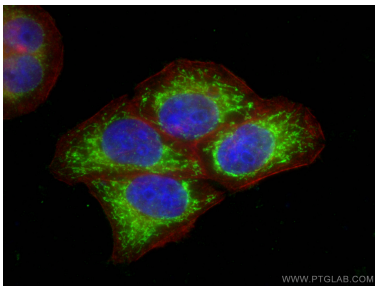
Immunohistochemical analysis of paraffin-embedded human liver tissue slide using 16475-1-AP (Albumin antibody) at dilution of 1:200 (under 10x lens).



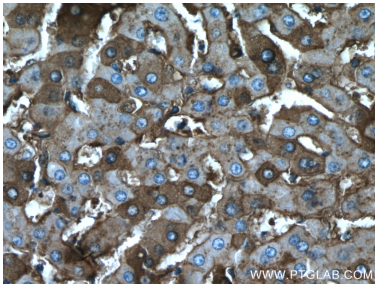
Immunofluorescent analysis of (4% PFA) fixed paraffin-embedded mouse liver tissue using Albumin antibody (16475-1-AP) at dilution of 1:200 and CoraLite@488-Conjugated AffiniPure Goat Anti-Rabbit IgG(H+L) (SA00013-2). Heat mediated antigen retrieval with Tris-EDTA buffer (pH 9.0).



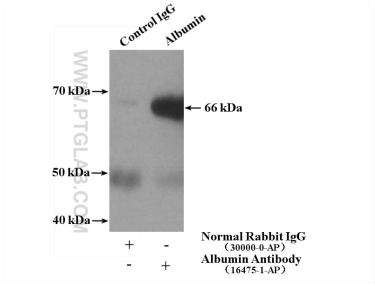
Immunofluorescent analysis of (4% PFA) fixed paraffin-embedded mouse liver tissue using Albumin antibody (16475-1-AP) at dilution of 1:200 and CoraLite@488-Conjugated AffiniPure Goat Anti-Rabbit IgG(H+L) (SA00013-2). Heat mediated antigen retrieval with Tris-EDTA buffer (pH 9.0).



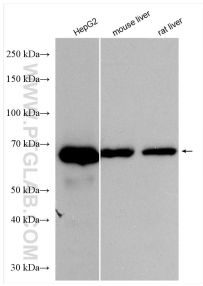
Immunofluorescent analysis of (-20°C Ethanol) fixed L02 cells using Albumin antibody (16475-1-AP) at dilution of 1:400 and CoraLite@488-Conjugated AffiniPure Goat Anti-Rabbit IgG(H+L), CL594-Phalloidin (red).



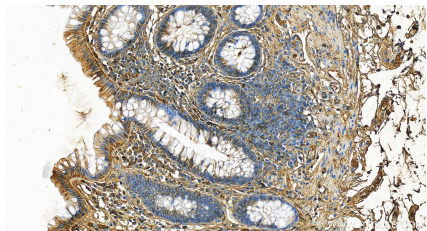
Immunohistochemical analysis of paraffin-embedded human liver tissue slide using 16475-1-AP (Albumin antibody) at dilution of 1:200 (under 40x lens).



IP result of anti-Albumin (IP:16475-1-AP, 4ug; Detection:16475-1-AP 1:10000) with human plasma lysate 4000ug.



Various lysates were subjected to SDS PAGE followed by western blot with 16475-1-AP (Albumin antibody) at dilution of 1:10000 incubated at room temperature for 1.5 hours.



Immunohistochemical analysis of paraffin-embedded human normal colon slide using 16475-1-AP (Albumin antibody) at dilution of 1:2000 (under 20x lens). Heat mediated antigen retrieval with Tris-EDTA buffer (pH 9.0).