

For Research Use Only

# GDPD5 Polyclonal antibody

Catalog Number: 16494-1-AP



## Basic Information

### Catalog Number:

16494-1-AP

### Size:

150ul , Concentration: 240 µg/ml by Nanodrop and 133 µg/ml by Bradford method using BSA as the standard;

### Source:

Rabbit

### Isotype:

IgG

### Immunogen Catalog Number:

AG9622

### GenBank Accession Number:

BC020203

### GeneID (NCBI):

81544

### UNIPROT ID:

Q8WTR4

### Full Name:

glycerophosphodiester phosphodiesterase domain containing 5

### Calculated MW:

127 aa, 13 kDa

### Observed MW:

52 kDa

### Purification Method:

Antigen affinity purification

### Recommended Dilutions:

IP 0.5-4.0 ug for 1.0-3.0 mg of total protein lysate  
IHC 1:20-1:200

## Applications

### Tested Applications:

IP, IHC, ELISA

### Species Specificity:

human, mouse, rat

**Note-IHC: suggested antigen retrieval with TE buffer pH 9.0; (\*) Alternatively, antigen retrieval may be performed with citrate buffer pH 6.0**

### Positive Controls:

IP : mouse skeletal muscle tissue,

IHC : human spleen tissue, human kidney tissue, human ovary tissue, human placenta tissue

## Background Information

GDPD5(Glycerophosphodiester phosphodiesterase domain-containing protein 5) is also named as GDE2 and belongs to the glycerophosphoryl diester phosphodiesterase family. The deduced sequence of GDE2 contains 607 amino acids with seven putative transmembrane regions. GDPD5 is a glycerophosphocholine phosphodiesterase that osmotically regulates the osmoprotective organic osmolyte GPC(PMID:18667693). It has 5 isoforms produced by alternative splicing.

## Storage

### Storage:

Store at -20°C. Stable for one year after shipment.

### Storage Buffer:

PBS with 0.02% sodium azide and 50% glycerol pH 7.3.

Aliquoting is unnecessary for -20°C storage

\*\*\* 20ul sizes contain 0.1% BSA

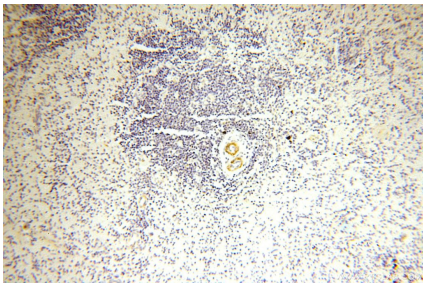
For technical support and original validation data for this product please contact:

T: 1 (888) 4PTGLAB (1-888-478-4522) (toll free in USA), or 1(312) 455-8498 (outside USA)

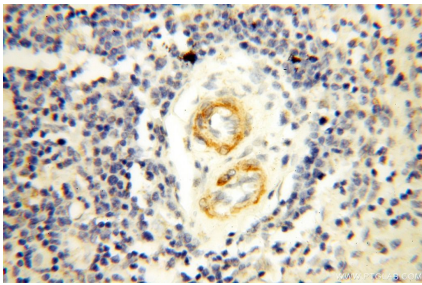
E: [proteintech@ptglab.com](mailto:proteintech@ptglab.com)  
W: [ptglab.com](http://ptglab.com)

This product is exclusively available under Proteintech Group brand and is not available to purchase from any other manufacturer.

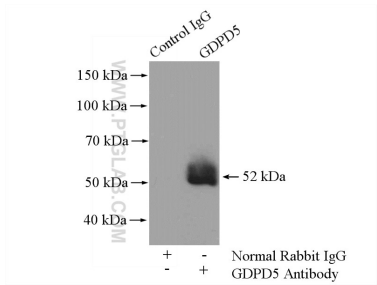
Selected Validation Data



Immunohistochemical analysis of paraffin-embedded human spleen using 16494-1-AP (GDPD5 antibody) at dilution of 1:50 (under 10x lens).



Immunohistochemical analysis of paraffin-embedded human spleen using 16494-1-AP (GDPD5 antibody) at dilution of 1:50 (under 40x lens).



IP result of anti-GDPD5 (IP:16494-1-AP, 4ug; Detection:16494-1-AP 1:500) with mouse skeletal muscle tissue lysate 3600ug.