

For Research Use Only

MRPL19 Polyclonal antibody

Catalog Number: 16517-1-AP

2 Publications



Basic Information

Catalog Number:

16517-1-AP

Size:

150ul, Concentration: 400 ug/ml by Nanodrop and 267 ug/ml by Bradford method using BSA as the standard;

Source:

Rabbit

Isotype:

IgG

Immunogen Catalog Number:

AG9738

GenBank Accession Number:

BC030144

GeneID (NCBI):

9801

UNIPROT ID:

P49406

Full Name:

mitochondrial ribosomal protein L19

Calculated MW:

292 aa, 34 kDa

Observed MW:

34 kDa

Purification Method:

Antigen affinity purification

Recommended Dilutions:

WB: 1:500-1:1000

IHC: 1:200-1:800

IF/ICC: 1:50-1:500

Applications

Tested Applications:

WB, IHC, IF/ICC, ELISA

Cited Applications:

WB, IHC

Species Specificity:

human, mouse

Cited Species:

human

Note-IHC: suggested antigen retrieval with TE buffer pH 9.0; (*) Alternatively, antigen retrieval may be performed with citrate buffer pH 6.0

Positive Controls:

WB : mouse kidney tissue, HeLa cells, mouse liver tissue

IHC : human stomach cancer tissue,

IF/ICC : HeLa cells,

Notable Publications

Author	Pubmed ID	Journal	Application
Elena Lavdovskaia	38992089	Nat Struct Mol Biol	WB
Dong Wei	37577299	Transl Lung Cancer Res	IHC

Storage

Storage:

Store at -20°C. Stable for one year after shipment.

Storage Buffer:

PBS with 0.02% sodium azide and 50% glycerol, pH7.3

Aliquoting is unnecessary for -20°C storage

*** 20ul sizes contain 0.1% BSA

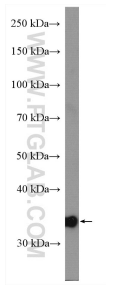
For technical support and original validation data for this product please contact:

T: 1 (888) 4PTGLAB (1-888-478-4522) (toll free in USA), or 1(312) 455-8498 (outside USA)

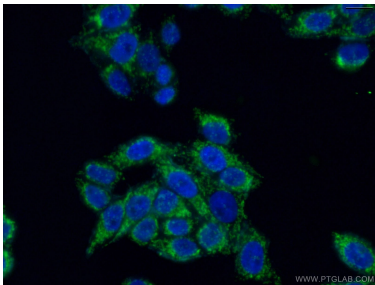
E: proteintech@ptglab.com
W: ptglab.com

This product is exclusively available under Proteintech Group brand and is not available to purchase from any other manufacturer.

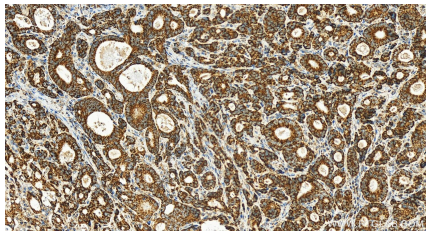
Selected Validation Data



mouse kidney tissue were subjected to SDS PAGE followed by western blot with 16517-1-AP (MRPL19 antibody) at dilution of 1:500 incubated at room temperature for 1.5 hours.



Immunofluorescent analysis of (4% PFA) fixed HeLa cells using 16517-1-AP (MRPL19 antibody) at dilution of 1:50 and Alexa Fluor 488-conjugated AffiniPure Goat Anti-Rabbit IgG(H+L).



Immunohistochemical analysis of paraffin-embedded human stomach cancer tissue slide using 16517-1-AP (MRPL19 antibody) at dilution of 1:400 (under 20x lens). Heat mediated antigen retrieval with Tris-EDTA buffer (pH 9.0).