

For Research Use Only

PMEPA1 Polyclonal ANTIBODY



Catalog Number: 16521-1-AP

Featured Product

2 Publications

Basic Information

Catalog Number:
16521-1-AP

Size:
60 µg/150 µl

Source:
Rabbit

Isotype:
IgG

Purification Method:
Antigen affinity purification

Immunogen Catalog Number:
AC9744

GenBank Accession Number:
BC015918

GeneID (NCBI):
56937

Full Name:
prostate transmembrane protein, androgen induced 1

Calculated MW:
287aa, 32 kDa

Observed MW:
32 kDa

Recommended Dilutions:

WB 1:500-1:1000

IHC 1:200-1:800

IF 1:10-1:100

Applications

Tested Applications:

IF, IHC, WB, ELISA

Cited Applications:

WB

Species Specificity:

human,mouse,rat

Cited Species:

human

Note-IHC: suggested antigen retrieval with TE buffer pH 9.0; (*) Alternatively, antigen retrieval may be performed with citrate buffer pH 6.0

Positive Controls:

WB : L02 cells; DU 145 cells

IHC : human prostate cancer tissue; mouse ovary tissue

IF : PC-3 cells;

Background Information

Notable Publications

Author	Pubmed ID	Journal	Application
Masaru Koido	27697531	Biochem Biophys Res Commun	WB
Morgane Morabito	31328883	EMBO Mol Med	WB

Storage

Storage:

Store at -20°C. Stable for one year after shipment.

Storage Buffer:

PBS with 0.02% sodium azide and 50% glycerol pH 7.3.

Aliquoting is unnecessary for -20°C storage

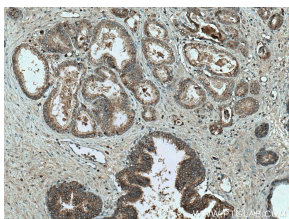
For technical support and original validation data for this product please contact:

T: 1 (888) 4PTGLAB (1-888-478-4522) (toll free in USA), or 1(312) 455-8498 (outside USA)

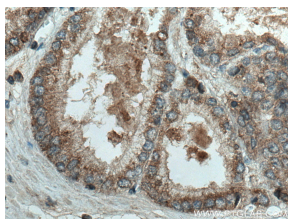
E: proteintech@ptglab.com
W: ptglab.com

This product is exclusively available under Proteintech Group brand and is not available to purchase from any other manufacturer.

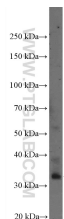
Selected Validation Data



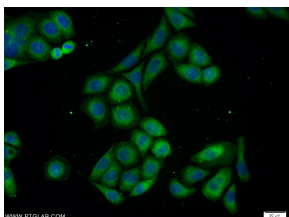
Immunohistochemical analysis of paraffin-embedded human prostate cancer tissue slide using 16521-1-AP (PMEPA1 antibody) at dilution of 1:400 (under 10x lens), heat mediated antigen retrieved with Tris-EDTA buffer(pH9).



Immunohistochemical analysis of paraffin-embedded human prostate cancer tissue slide using 16521-1-AP (PMEPA1 antibody) at dilution of 1:400 (under 40x lens), heat mediated antigen retrieved with Tris-EDTA buffer(pH9).



L02 cells were subjected to SDS PAGE followed by western blot with 16521-1-AP (PMEPA1 Antibody) at dilution of 1:600 incubated at room temperature for 1.5 hours



Immunofluorescent analysis of PC-3 cells using 16521-1-AP(PMEPA1 antibody) at dilution of 1:25 and Alexa Fluor 488-conjugated AffiniPure Goat Anti-Rabbit IgG(H+L)