

For Research Use Only

# PALMD Polyclonal antibody

Catalog Number: 16531-1-AP

Featured Product

2 Publications



## Basic Information

**Catalog Number:**

16531-1-AP

**Size:**

150ul, Concentration: 700 µg/ml by Nanodrop and 333 µg/ml by Bradford method using BSA as the standard;

**Source:**

Rabbit

**Isotype:**

IgG

**Immunogen Catalog Number:**

AG9796

**GenBank Accession Number:**

BC012570

**GeneID (NCBI):**

54873

**Full Name:**

palmdelphin

**Calculated MW:**

551 aa, 63 kDa

**Observed MW:**

80 kDa

**Purification Method:**

Antigen affinity purification

**Recommended Dilutions:**

WB 1:500-1:2000

IP 0.5-4.0 ug for IP and 1:500-1:1000 for WB

IHC 1:20-1:200

## Applications

**Tested Applications:**

IHC, IP, WB, ELISA

**Cited Applications:**

WB

**Species Specificity:**

human, mouse, rat

**Cited Species:**

human, mouse

**Note-IHC: suggested antigen retrieval with TE buffer pH 9.0; (\*) Alternatively, antigen retrieval may be performed with citrate buffer pH 6.0**

**Positive Controls:**

WB: HeLa cells, mouse lung tissue

IP: mouse heart tissue,

IHC: human liver tissue,

## Background Information

Palmdelphin, encoded by PALMD gene, is a newly identified cytosolic isoform of paralemmin-1, a lipid raft-associated protein implicated in cell shape control. Paralemmin (PalM) is a prenyl-palmitoyl anchored membrane protein that can drive membrane and process formation in neurons. Previous finding suggest that palmdelphin may peripherally associate with endomembranes or cytoskeleton-linked structures. Palmdelphin appears to be 80 kDa in Western blotting, larger than the predicated of 63 kDa, and this may be due to the acidic nature of this protein or its posttranslational modification.

## Notable Publications

Author	Pubmed ID	Journal	Application
N Dashzeveg	24810057	Cell Death Dis	WB
Sean-Patrick Riechers	26908611	Hum Mol Genet	WB

## Storage

**Storage:**

Store at -20°C. Stable for one year after shipment.

**Storage Buffer:**

PBS with 0.02% sodium azide and 50% glycerol pH 7.3.

Aliquoting is unnecessary for -20°C storage

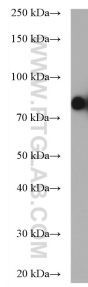
For technical support and original validation data for this product please contact:

T: 1 (888) 4PTGLAB (1-888-478-4522) (toll free in USA), or 1(312) 455-8498 (outside USA)

E: [proteintech@ptglab.com](mailto:proteintech@ptglab.com)  
W: [ptglab.com](http://ptglab.com)

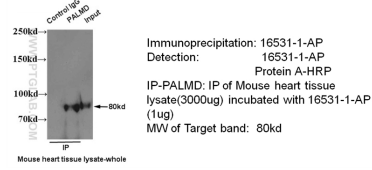
**This product is exclusively available under Proteintech Group brand and is not available to purchase from any other manufacturer.**

## Selected Validation Data

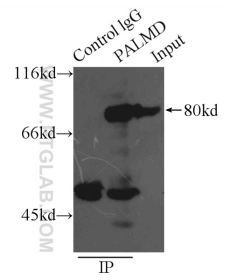


HeLa cells were subjected to SDS PAGE followed by western blot with 16531-1-AP (PALMD antibody) at dilution of 1:600 incubated at room temperature for 1.5 hours.

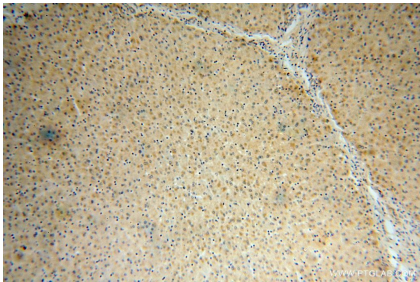
### IP & WB of 16531-1-AP with Mouse heart tissue



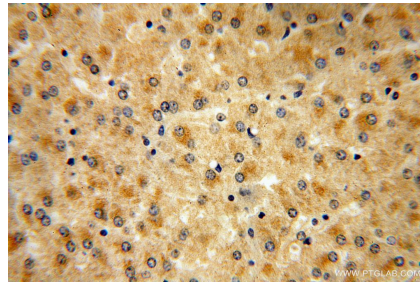
IP result of PALMD antibody (16531-1-AP for Ip and Detection) with mouse heart tissue lysate.



IP Result of anti-PALMD (IP:16531-1-AP, 5ug; Detection:16531-1-AP 1:500) with mouse heart tissue lysate 6000ug.



Immunohistochemical analysis of paraffin-embedded human liver using 16531-1-AP (PALMD antibody) at dilution of 1:100 (under 10x lens).



Immunohistochemical analysis of paraffin-embedded human liver using 16531-1-AP (PALMD antibody) at dilution of 1:100 (under 40x lens).