

For Research Use Only

CTHRC1 Polyclonal antibody

Catalog Number: 16534-1-AP

Featured Product

32 Publications



Basic Information

Catalog Number:

16534-1-AP

Size:

150ul, Concentration: 650 ug/ml by Nanodrop;

Source:

Rabbit

Isotype:

IgG

Immunogen Catalog Number:

AG9812

GenBank Accession Number:

BC014245

GeneID (NCBI):

115908

UNIPROT ID:

Q96CG8

Full Name:

collagen triple helix repeat containing 1

Calculated MW:

243 aa, 26 kDa

Observed MW:

25-30 kDa

Purification Method:

Antigen affinity purification

Recommended Dilutions:

WB: 1:500-1:3000

IP: 0.5-4.0 ug for 1.0-3.0 mg of total protein lysate

IF/ICC: 1:50-1:500

FC (Intra): 0.13 ug per 10⁶ cells in a 100 µl suspension

Applications

Tested Applications:

WB, IF/ICC, FC (Intra), IP, ELISA

Cited Applications:

WB, IHC, IF, CoIP

Species Specificity:

human, mouse, rat

Cited Species:

human, mouse, rat

Positive Controls:

WB: A375 cells, Jurkat cells, mouse lung tissue

IP: A375 cells,

IF/ICC: A375 cells, HepG2 cells

FC (Intra): A375 cells,

Background Information

Collagen triple helix repeat-containing protein 1 (CTHRC1), also known as protein NMTC1, is a glycosylated secreted protein. CTHRC1 was identified as a novel molecular in injured and diseased arteries where it may contribute to vascular remodeling by limiting collagen matrix deposition and promoting cell migration (PMID: 15618538). It has been reported that CTHRC1 is a positive regulator of osteoblastic bone formation (PMID: 18779865). Besides, studies reveal that CTHRC1 expression is implicated in various malignancies, including hepatocellular carcinoma, gastric carcinoma, colon cancer, and lung cancer (PMID: 23922981; 24504172; 24746208; 25139095).

Notable Publications

Author	Pubmed ID	Journal	Application
Huifang Zhou	31576140	Onco Targets Ther	IHC
Biyang Guo	29021002	J Ovarian Res	WB, IHC
Lu-Ying Li	31119444	Clin Exp Metastasis	WB

Storage

Storage:

Store at -20°C. Stable for one year after shipment.

Storage Buffer:

PBS with 0.02% sodium azide and 50% glycerol, pH7.3

Aliquoting is unnecessary for -20°C storage

*** 20ul sizes contain 0.1% BSA

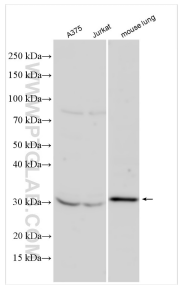
For technical support and original validation data for this product please contact:

T: 1 (888) 4PTGLAB (1-888-478-4522) (toll free in USA), or 1(312) 455-8498 (outside USA)

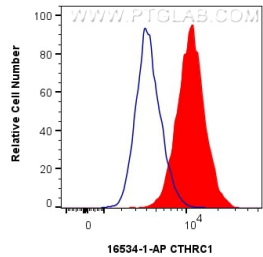
E: proteintech@ptglab.com
W: ptglab.com

This product is exclusively available under Proteintech Group brand and is not available to purchase from any other manufacturer.

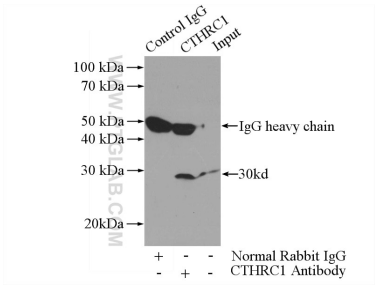
Selected Validation Data



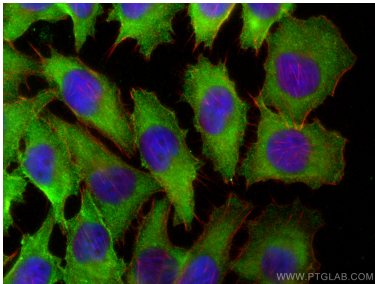
Various lysates were subjected to SDS PAGE followed by western blot with 16534-1-AP (CTHRC1 antibody) at dilution of 1:1500 incubated at room temperature for 1.5 hours.



1x10⁶ A375 cells were intracellularly stained with 0.13 ug CTHRC1 Polyclonal antibody (16534-1-AP) and CoraLite®488-Conjugated Goat Anti-Rabbit IgG(H+L) (SA00013-2)(red), or 0.13 ug Isotype Control (blue). Cells were fixed with 4% PFA and permeabilized with Flow Cytometry Perm Buffer (PF00011-C).



IP result of anti-CTHRC1 (IP:16534-1-AP, 3ug; Detection:16534-1-AP 1:500) with A375 cells lysate 3600ug.



Immunofluorescent analysis of (-20°C Ethanol) fixed A375 cells using CTHRC1 antibody (16534-1-AP) at dilution of 1:200 and CoraLite®488-Conjugated AffiniPure Goat Anti-Rabbit IgG(H+L) (SA00013-2), CL594-Phalloidin (red).