

For Research Use Only

# CCKBR-specific Polyclonal ANTIBODY



Catalog Number: 16549-1-AP

1 Publications

## Basic Information

Catalog Number:

16549-1-AP

Size:

150UL, Concentration: 300 µg/ml by Bradford method using BSA as the standard;

Source:

Rabbit

Isotype:

IgG

GenBank Accession Number:

NM\_176875

GeneID (NCBI):

887

Full Name:

cholecystokinin B receptor

Calculated MW:

56 kDa

Observed MW:

64 kDa, 50 kDa

Purification Method:

Antigen affinity purification

Recommended Dilutions:

WB 1:500-1:1000

IF 1:10-1:100

## Applications

Tested Applications:

IF, WB, ELISA

Cited Applications:

IF

Species Specificity:

human

Cited Species:

human

Positive Controls:

WB : BxPC-3 cells, human stomach tissue, SGC-7901 cells

IF : BxPC-3 cells,

## Background Information

The cholecystokinin B receptor (CCKBR) is a G-protein coupled receptor for gastrin and cholecystokinin (CCK), regulatory peptides of the brain and gastrointestinal tract. This protein is a type B gastrin receptor, which has a high affinity for both sulfated and nonsulfated CCK analogs and is found principally in the central nervous system and the gastrointestinal tract. A misspliced transcript variant including an intron has been observed in cells from colorectal and pancreatic tumors.

## Notable Publications

Author	Pubmed ID	Journal	Application
Jiang Chang	32488497	J Cancer Res Clin Oncol	IF

## Storage

Storage:

Store at -20°C. Stable for one year after shipment.

Storage Buffer:

PBS with 0.02% sodium azide and 50% glycerol pH 7.3.

Aliquoting is unnecessary for -20°C storage

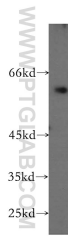
For technical support and original validation data for this product please contact:

T: 1 (888) 4PTGLAB (1-888-478-4522) (toll free in USA), or 1(312) 455-8498 (outside USA)

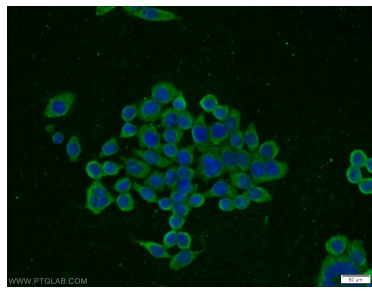
E: [proteintech@ptglab.com](mailto:proteintech@ptglab.com)  
W: [ptglab.com](http://ptglab.com)

This product is exclusively available under Proteintech Group brand and is not available to purchase from any other manufacturer.

## Selected Validation Data



BxPC-3 cells were subjected to SDS PAGE followed by western blot with 16549-1-AP (CCKBR-specific antibody) at dilution of 1:300 incubated at room temperature for 1.5 hours.



Immunofluorescent analysis of BxPC-3 cells using 16549-1-AP (CCKBR-specific antibody) at dilution of 1:25 and Alexa Fluor 488-conjugated AffiniPure Goat Anti-Rabbit IgG(H+L).