

For Research Use Only

SPG11 Polyclonal ANTIBODY



Catalog Number: 16555-1-AP

Featured Product

5 Publications

Basic Information

Catalog Number:
16555-1-AP

Size:
40 µg/150 µl

Source:
Rabbit

Isotype:
IgG

Purification Method:
Antigen affinity purification

Immunogen Catalog Number:
AC9769

GenBank Accession Number:
BC024161

GeneID (NCBI):
80208

Full Name:
spastic paraplegia 11 (autosomal recessive)

Calculated MW:
2443aa, 279 kDa

Observed MW:

Recommended Dilutions:
IHC 1:50-1:500

Applications

Tested Applications:
IHC, ELISA

Cited Applications:
WB

Species Specificity:
human,mouse,rat

Cited Species:
human, mouse

Note: suggested antigen retrieval with TE buffer pH 9.0; (*) Alternatively, antigen retrieval may be performed with citrate buffer pH 6.0

Positive Controls:

IHC : human liver tissue;

Background Information

Notable Publications

Author	Pubmed ID	Journal	Application
Jaerak Chang	25365221	J Clin Invest	WB
Benoît Renvoisé	24999486	Ann Clin Transl Neurol	WB
Julien Branchu	28237315	Neurobiol Dis	WB

Storage

Storage:

Store at -20°C. Stable for one year after shipment.

Storage Buffer:

PBS with 0.1% sodium azide and 50% glycerol pH 7.3.

Aliquoting is unnecessary for -20°C storage

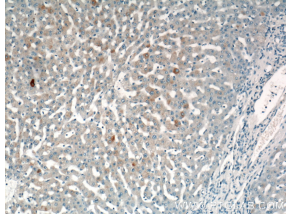
For technical support and original validation data for this product please contact:

T: 1 (888) 4PTGLAB (1-888-478-4522) (toll free in USA), or 1(312) 455-8498 (outside USA)

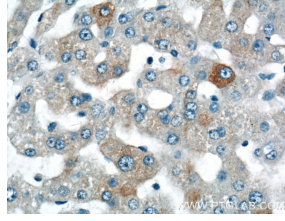
E: proteintech@ptglab.com
W: ptglab.com

This product is exclusively available under Proteintech Group brand and is not available to purchase from any other manufacturer.

Selected Validation Data



Immunohistochemistry of paraffin-embedded human liver tissue slide using 16555-1-AP SPG11 Antibody at dilution of 1:200 (under 10x lens).



Immunohistochemistry of paraffin-embedded human liver tissue slide using 16555-1-AP SPG11 Antibody at dilution of 1:200 (under 40x lens).