

CD16

Polyclonal ANTIBODY

Catalog Number: 16559-1-AP

1 Publications

Basic Information

Catalog Number: 16559-1-AP	GenBank Accession Number: BC017865	Recommended Dilutions: WB 1:200-1:1000 IHC 1:50-1:500
Size: 30 µg/150 µl	GeneID (NCBI): 2214	
Source: Rabbit	Full Name: Fc fragment of IgG, low affinity IIIa, receptor (CD16a)	
Isotype: IgG	Calculated MW: 254aa, 29 kDa	
Purification Method: Antigen affinity purification	Observed MW: 55 kDa	
Immunogen Catalog Number: AC9787		

Applications

Tested Applications:
FC, IHC, WB, ELISA

Cited Applications:
IF

Species Specificity:
human

Cited Species:
human

Note: suggested antigen retrieval with TE buffer pH 9.0; (*) Alternatively, antigen retrieval may be performed with citrate buffer pH 6.0

Positive Controls:

WB : human placenta tissue;

IHC : human liver tissue; human tonsillitis tissue

Background Information

CD16 is a 50-70-kDa low affinity Fc receptor found on the surface of natural killer cells, neutrophil polymorphonuclear leukocytes, monocytes and macrophages. CD16 mediates antibody-dependent cellular cytotoxicity (ADCC) and other antibody-dependent responses, such as phagocytosis. CD16 has been identified as Fc receptors FcγRIIIa (CD16a) and FcγRIIIb (CD16b), encoded by two nearly identical genes, FCGR3A and the FCGR3B.

Notable Publications

Author	Pubmed ID	Journal	Application
Yanling Gou	30838396	Hum Reprod	IF

Storage

Storage:
Store at -20°C. Stable for one year after shipment.
Storage Buffer:
PBS with 0.1% sodium azide and 50% glycerol pH 7.3.
Aliquoting is unnecessary for -20°C storage

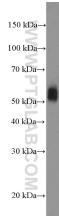
For technical support and original validation data for this product please contact:

T: 1 (888) 4PTGLAB (1-888-478-4522) (toll free in USA), or 1(312) 455-8498 (outside USA)

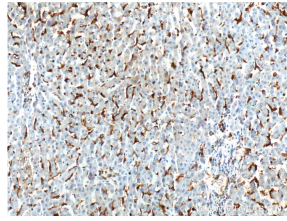
E: proteintech@ptglab.com
W: ptglab.com

This product is exclusively available under Proteintech Group brand and is not available to purchase from any other manufacturer.

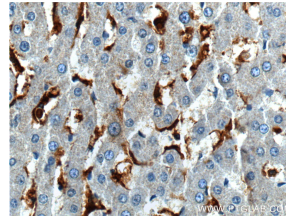
Selected Validation Data



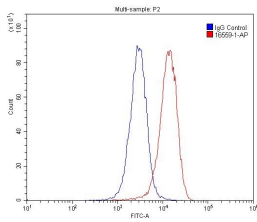
human placenta tissue were subjected to SDS PAGE followed by western blot with 16559-1-AP(CD16 Antibody) at dilution of 1:300 incubated at room temperature for 1.5 hours



Immunohistochemistry of paraffin-embedded human liver tissue slide using 16559-1-AP(CD16 Antibody) at dilution of 1:200 (under 10x lens).



Immunohistochemistry of paraffin-embedded human liver tissue slide using 16559-1-AP(CD16 Antibody) at dilution of 1:200 (under 40x lens).



1X10⁶ U-937 cells were stained with 0.2ug CD16 antibody (16559-1-AP, red) and control antibody (blue). Fixed with 4% PFA blocked with 3% BSA (30 min). Alexa Fluor 488-conjugated AffiniPure Goat Anti-Rabbit IgG(H+L) with dilution 1:1500.